



WAVE

REGATTA

HOWTH 2018

SAILING INSTRUCTIONS



MICHAEL JF WRIGHT
HOSPITALITY



Comhairle Contae
Fhine Gall
Fingal County
Council



CASSIDY
TRAVEL



eLight
Light as a Service



WAVE REGATTA HOWTH 2018

SAILING INSTRUCTIONS

Organised by Howth Yacht Club CLG
Friday 1 June, Saturday 2 June and Sunday 3 June

SECTION A: GENERAL INSTRUCTIONS

A1 Rules

The races shall be governed by the Racing Rules of Sailing (RRS), the Prescriptions of Irish Sailing, the Notice of Race, these Sailing Instructions and any amendments thereto. Competitors in races for One Design classes shall comply with their relevant Class Rules. Competitors in IRC and ECHO handicap classes shall comply with the rules of those handicapping systems. In the event of a conflict the Sailing Instructions shall prevail. This changes RRS 63.7

RRS Appendix T will apply

In all rules governing this regatta [DP] denotes a rule for which the penalty may, at the discretion of the Protest Committee, be less than a disqualification and [NP] denotes a rule that shall not be grounds for protests by a boat. This changes RRS 60.1(a).

A2 Equipment Inspection

1. For IRC classes only, excluding White Sails. **All boats are required to have completed a pre-event equipment inspection prior to racing.** Pre-event equipment inspections will be available at the following times:
 - Thursday 31st of May 14:00 to 20:00
 - Friday 1st of June 08:00 to 09:30
 - 1.2. Any boat not berthing in Howth before racing on the 1st of June must notify the Race Committee as early as possible. Pre-event equipment inspections may be carried out in Dun Laoghaire and/or Malahide.
2. The pre-event equipment inspection will include (but is not limited to) the following rules:
 - IRC21.3.5 STL measurement.
 - IRC21.2.4 E measurement.

- IRC22.6 Crew position / Lifelines. See IRC Notice 2018/01 and definition of 'taut' as per OSR 3.14i (i & ii) in Appendix A.

Competitors are reminder that under RRS78 while a boat is racing, the owner or person in charge shall ensure the boat complies with the class rules. It is always better to check beforehand than have to make last minute changes.

3. A boat subject to an on the water equipment inspection will be signalled from a rib by equipment inspectors and the boat should follow their instructions.

4. [NP] Equipment Inspection Failures:

Any boat which fails an equipment inspection after she has finished her first race will be subject to a **scoring penalty of 30%** (calculated as per RRS 44.3(c)) in the preceding race for a first infringement without a hearing. This changes RRS 44.3, 63.1 and A5.

Removal of Event Limitation Marks will constitute a failure of equipment inspection. In the unlikely event of an Event Limitation Mark falling off, the competitor must notify the Race Committee directly after the race where it is identified.

4.1. A boat that fails an equipment inspection a second or more times **will be scored DNE** for all races sailed on the day of the infringement (or the day prior if the infringement is detected before racing on the next day) without a hearing. This changes RRS 63.1 and A5.

4.2. After an infringement under SI A2.4.1 by a boat the Technical Committee may protest the boat under RRS 2 or may submit a report to the Protest Committee to consider taking action under RRS 69.

A3 Notices to Competitors

Notices to competitors will be posted on the Official Notice Board located in the archway beside the Marina Office.

A4 Change of Sailing Instructions

Changes to Sailing Instructions will be posted not later than two hours before the scheduled start of the first race so affected. Changes to the schedule of races, will be posted before 2000hrs on the evening before such change is applicable. Flag L displayed on the flagpole at the top of the marina bridge denotes that a change of Sailing Instructions has been made.

A5 Signals Made Ashore

Signals made ashore will be displayed on the flagpole at the top of the marina bridge. When flag AP is displayed ashore "one minute" is replaced with "not less than 60 minutes" in Race Signal AP. This changes RRS "Race Signals".

A6 Protests

Protests and requests for redress shall be in writing and delivered to the race office within the protest time limit. Protest forms will be available at the race office.

A boat intending to protest shall notify the finish boat as soon as possible after finishing.

The Protest Time Limit is 90 minutes from the time of finish of the last boat in each of the fleets as appropriate. This time limit shall be extended to two hours in the event of the race being finished at either the Taylor Buoy or the Burren Perch at Lambay Island. These times will be posted on the Official Notice Board.

Notices of protests by the Race Committee, Technical Committee or Protest Committee will be posted before the end of the protest time limit to inform boats under rule 61.1(b).

The time and place of Protest Hearings will be initially posted on the Official Notice Board within 15 minutes of the protest time limit. The listing of a boat on this schedule shall constitute informing her of a hearing under RRS 63.2. Parties involved shall present themselves and their witnesses at the time and place indicated on the schedule.

On the last day of scheduled racing a request for a reopening of a hearing under RRS 66 shall be delivered as follows:

- Within the protest time limit if the party requesting reopening was informed of the decision on the previous day
- No later than 30 minutes if the party requesting reopening was informed of the decision on that day
- If no racing has taken place that day, no later than 30 minutes after 'AP over A' is displayed ashore. This changes RRS 66.
- On the last scheduled day of racing, a request for redress based on a Protest Committee decision under rule 62.2 shall be delivered no later than 30 minutes after the decision was posted. This changes RRS 62.2

To request correction of an alleged error in posted race or series results, a boat shall complete a scoring enquiry form available at the race office.

[DP] Penalties for a breach of the class rules may, at the discretion of the protest committee, be less than disqualification.

A7 Arbitration

If a party is not present at an arbitration meeting, any party that was present may take a Post-Race Penalty at any time until the Protest Committee has completed taking evidence. This changes RRS T1 (a).

A8 Navigation Marks and Obstructions

The Navigation Marks in and around Howth Sound shall be left as follows –

South Rowan Buoy: to be passed to the West and South.

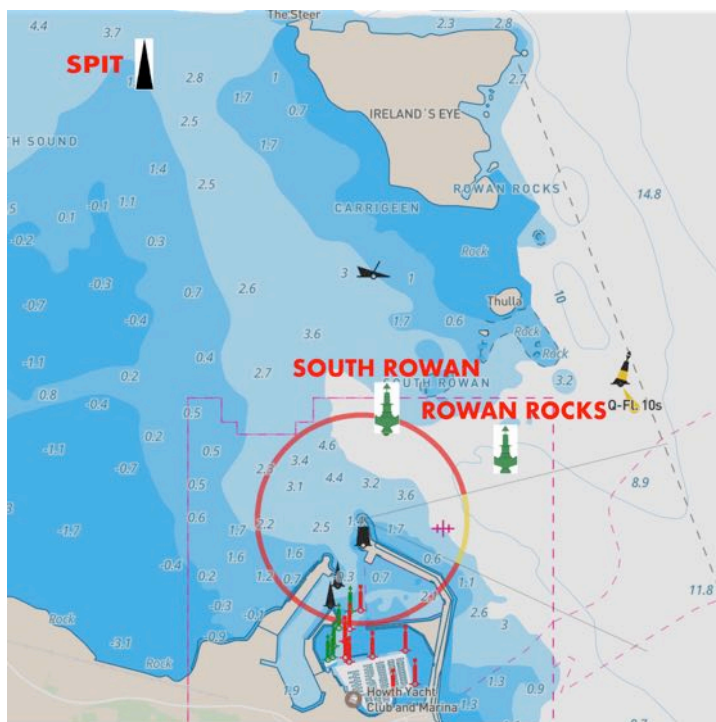
Rowan Rocks Buoy: to be passed to the East and South.

HYC Spit Mark: to be passed to the East.

Any part of Ireland's Eye or Lambay Island capable of being touched while racing is designated as an obstruction.

When rounding Lambay Island, boats shall pass outside the Taylor Buoy and Burren Perch and are advised to give both a wide berth.

Competitors are reminded of a trawler wreck in Howth Sound, south of the Carrageen Rocks on Ireland's Eye, which is submerged at most stages of the tide.



A9 Radio Communications

Competitors are advised to keep a listening watch on VHF Channel 77 for East Committee Boat, Channel 69 for West Committee Boat and Channel 71 for the Pier Starts, where information relevant to racing may be broadcast. Should this information be broadcast, it shall not constitute outside assistance and shall not be the subject of any protest or claim for redress. Failure to broadcast this information shall not be the basis for any claim for redress.

The Squib class rules are changed by this Sailing Instruction to allow use of VHF radio.

[NP][DP] Competitors who retire from a race shall inform the Race Committee promptly by radio on Channel 77, 69 or 71 as appropriate. Competitors without radio should inform the Race Office on coming ashore.

A10 Prize-giving

The approximate time of the prize-giving for the Lambay Races will be 1800 on Saturday 2 June.

The final prizegiving will be held on Sunday 3 June at 1800.

A11 Safety

Competitors participate entirely at their own risk; see Fundamental Rule 4, Decision to Race and the Irish Sailing Safety Booklet. Open boat entrants are referred to relevant class regulations. The wearing of suitable personal flotation devices in all boats is strongly recommended at all times.

The responsibility for the safety of competing boats and their crews lies solely with the said competitors.

Howth Yacht Club CLG. and/ or the Organising Committee will not accept any liability for material damage, personal injury or death sustained in conjunction with, prior to, during, or after racing.

A12 Insurance

Each participating boat shall be insured with adequate, valid, third party liability insurance, valid for the duration of the Wave Regatta.

A13 Regatta Flag (NP)

As a courtesy to the sponsors, boats are requested to fly the Regatta Flag at all times while not racing and when in the marina for the duration of the Regatta

A14 Clean Regattas

As part of Howth Yacht Club's partnership with 'Sailors for the Sea', WAVE is a 'Clean Regatta' and is fully supportive of sustainability of our land and marine environments. As plastic is one of the principal pollutants of the sea, all competitors will be provided with free reusable beakers as part of the entry and chilled, filtered water will be available at the entrance to the marina. We ask you to support this initiative by not bringing plastic bottles to the event. We would also ask that you try and eliminate any plastic wrapping in your consumables on board and to recycle any necessary plastic when ashore.

The organisers would encourage competitors and supporters to do their bit on land by choosing to cycle, car share or use public transport to get to the event.



SECTION B - IRC FLEETS

B1 The following pennants shall identify the classes:

Class 0 - Numeral 0
Class 1 - Numeral 1
Class 2 - Numeral 2
Class 3 - Numeral 3
Non-Spinnaker 1 – Numeral 4
Non-Spinnaker 2 – Numeral 5
Classes 0, 1 and 2 shall constitute Fleet 1
Classes 3, 4 and 5 shall constitute Fleet 2

The same numeral flags will be used by the Race Committee as the class flag for each Fleet.

Boats shall display prominently their class pennant from their backstay at all times while racing. Any boat not doing so shall be scored DNF, this changes RRS A5 (scores determined by the Race Committee).

B2 Start Times:

Friday 1 June: **10:55** Warning signal (both fleets), with 2 other races scheduled to follow.
Saturday 2 June: **10:55** Warning signal for Lambay Races for *Fleet 1* (see Section C)
 11:55 Warning signal for Lambay Races for *Fleet 2* (see Section C)
Sunday 3 June: **10:55** Warning signal (both fleets) with 2 other races scheduled to follow.
 There will be no starts after 15:30 on Sunday

B3 Schedule of Races:

Friday 1 June:
 Fleet 1: Three races are scheduled (West Course)
 Fleet 2: Three races are scheduled (East Course)
Saturday 2 June:
 Fleet 1: Lambay Races
 Fleet 2: Lambay Races
Sunday 3 June:
 Fleet 1: Three races are scheduled (East Course)
 Fleet 2: Three races are scheduled (West Course)

B4 Starting Area

East Course: The starting area will be North of Ireland's Eye.
West Course: The starting area will be North West of Ireland's Eye

B5 Starting Line (Both West and East Courses)

The starting line shall be between a red/white pole (or main mast), on a committee boat (to be passed to starboard), which will display a yellow flag for the West course and an orange flag for the East course and the mast on a pin end boat, or an orange start mark.

B6 Starting Time Limit

A boat starting later than ten minutes after her starting signal will be scored DNS. This changes RRS Appendix A4.1.

B7 Course Designation: (Both West and East Courses)

The course for Round the Cans races will be selected by the Race Officer and relayed to competitors via VHF (channel 77- East course and 69 – West course) and will be displayed on the relevant Committee Boat.

Round the Cans course will be indicated by displaying IC Flag R

Windward/Leeward course will be indicated by displaying IC Flag W

Triangular course will be indicated by displaying IC Flag T

B8 Windward/Leeward course:

The number of rounds to be sailed on the windward/leeward course will be signalled by the display of a number board on the committee boat and will indicate as follows:

Marks to be rounded to port (with the exception of the gate) in the following order:

No 1: 1 – 2 – G – F

No 2: 1 – 2 – G – 1 – 2 – G – F

No 3: 1 – 2 – G – 1 – 2 – G – 1 – 2 – G – F

In the above courses, Mark G indicates a leeward gate. Should both gate marks not be laid, boats shall regard the one mark as a port rounding mark.

B9 Triangular course:

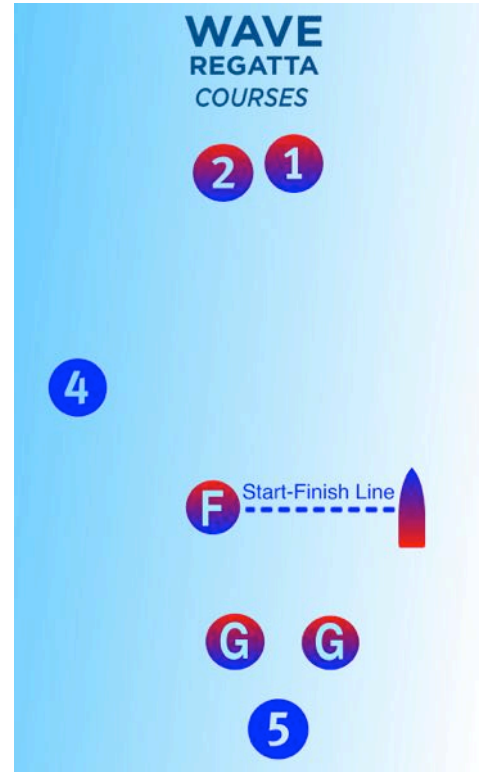
The number of rounds to be sailed on the triangular course will be signalled by the display of a number board on the committee boat and will indicate as follows:

Marks to be rounded to port in the following order:

No 1: 1 – 2 – 4 – 5 – F

No 2: 1 – 2 – 4 – 5 – 1 – 2 – 4 – 5 – F

No 3: 1 – 2 – 4 – 5 – 1 – 2 – 4 – 5 – 1 – 2 – 4 – 5 – F



B10 Change of Course:

In order to maintain the integrity of the course, the Race Committee may make small changes to the positions of the marks. These will not be signalled. This changes RRS 33.

B11 Description of Marks for Windward/Leeward and Triangular Courses:

Start mark: This will normally be a pin end committee boat. However, it may be substituted by an orange mark

Course marks:

For the **Windward/Leeward and triangular course**, these will normally be black inflatable marks, except for marks 4 and 5 which will be yellow inflatable marks

Finish mark: This will normally be a blue dan type buoy. However, it may be substituted by an orange dan type buoy

B12 Round the Cans Courses:

The courses to be sailed on the Round the Cans races will be selected from the marks indicated on the course card which shall form part of these Sailing Instructions and may include the following marks:

MA: Marquette T1

AR: Angler's Rest

BS: Bloody Stream

HH: Hogs and Heifers

For all Round the Cans races, a Windward mark (Candy stripe type) will be laid approximately to windward of the Committee Boat. This shall be rounded to Port as the first mark on the course. Thereafter, boats shall sail to the first mark as indicated on the course displayed and continue to sail around the marks in the order as displayed.

Should the Committee Boat be displaying a White Flag, boats shall disregard the Windward mark (or it may not be laid) and sail directly to first mark on the course as displayed.

B13 Shortened course:

1 For the Round the Cans races, RRS 32 shall apply

2 For Windward/Leeward and Triangular races, in addition to the provisions of RRS 32, the course may be shortened by the Race Committee positioning a mark boat at either mark 2, 5 or G, displaying IC Flag F and making sound signals. Boats shall then sail directly to the finish line from that mark.

B14 Finish Line (Both West and East Courses)

1 The finishing line, unless shortened as in B13.2 above, will be between the red and white pole or mainmast on the finishing vessel displaying a blue flag at the starboard end and the port end finishing mark.

2 Except when finishing, boats shall not cross the finish line in either direction when the blue flag is displayed on the finishing vessel.

B15 Time Limits:

For all fleets, boats failing to finish a race within thirty minutes after the first boat sails the course and finishes will be scored 'DNF' without a hearing. This changes RRS 35 (time limit and scores), A4 (low point system) and A5 (scores determined by the race committee).

SECTION C - LAMBAY RACES (Saturday 2nd June)

IRC FLEETS & Puppeteers

C1 Starting Area

The starting area will be North of Ireland's Eye

C2 Starting Line

The starting line shall be between a red/white pole (or main mast), on a committee boat (to be passed to starboard), which will display an orange flag and the mast on a pin end boat, or an orange start mark.

C3 Start Sequence:

(Start sequence 1) – Channel 77

<u>Class</u>	<u>Flag</u>
Class 0	No. 0
Class 1	No. 1
Class 2	No. 2

H.W. 14:44 Ht: 3.55m L.W. 20:28 Ht: 1.00m

Start

1100

The warning signal for the 1st start will be at 1055.

Subsequent starts will be at **10 minute** intervals

Note: Class 0 and Class 1 will include ISORA boats

(Start sequence 2) – Channel 77

<u>Class</u>	<u>Flag</u>
Class 3	No. 3
Non-Spinnaker 1	No. 4
Non-Spinnaker 2	No. 5
Puppeteer 22	A

Start

1200

The warning signal for the 1st start will be at 1155.

Subsequent starts will be at **5 minute** intervals

C4 Course Designation

1. The courses to be sailed will be selected from the marks indicated on the course card to these sailing instructions and may include the following marks:

MA:	Marquette T1
AR:	Angler's Rest
BS:	Bloody Stream
HH:	Hogs and Heifers

2. A Windward mark (Yellow in colour) will be laid approximately to windward of the Committee Boat. This shall be rounded to Port as the first mark in all races, Thereafter, boats shall sail to the first mark as indicated on the course displayed and continue to sail around the marks in the order as displayed.

Should the Committee Boat be displaying a White Flag, boats shall disregard the Windward mark (or it may not be laid) and sail directly to the first mark on the course as displayed.

C5 Shortened course:

RRS 32 shall apply

C6 Finishing Line

The finish line, unless the course is shortened, shall be between a red/white pole [or mainmast] on the Committee Boat in the vicinity of Mark (F) displaying a blue flag, which shall be left to Starboard and the red vertical line on the East Pier Starter's Hut.



PIER START FLEETS (One Design Classes) Friday 1st & Saturday 2nd June

Special Notice:

If, it is not possible to run the Lambay Races on Saturday 2 June, it is the intention of the Race Committee to run the Lambay Races on Sunday 3 June 2017. The time of the Warning Signals for Saturday 3 June and all other Sailing Instructions shall be applicable.

C7 Starting Area

The starting area will be in Howth Sound.

C8 Starting Line

The Starting Line will be one of the HYC Starting Lines as shown on the diagram. It will be indicated by letter displayed on the Starter's Hut and is defined as a line extending from the centre line of the HYC pier start hut to outer mark A, B or C - see diagram.



C9 Start Sequence

Friday 1 June HW 14:06 (3.68m) Pier Fleet Starts – Channel 71

<u>Class</u>	<u>Flag</u>	<u>Start</u>
Puppeteer 22	A	1830
Howth 17s	C	The warning signal for the 1 st start will be at 1825
Shipman	W	Subsequent starts will be at 5-minute intervals
Ruffian 23	U	
Taste of Racing	J	

Saturday 2 June H.W. 14:44 (3.55m) Pier Fleet Starts – Channel 71

<u>Class</u>	<u>Flag</u>	<u>Start</u>
Shipman	W	1130
Ruffian 23	U	The warning signal for the 1 st start will be at 1125
Squib	K	Subsequent starts will be at 5 minute intervals
B 211's	U	
HYC 17's	C	
Taste of Racing	J	

C10 Course Designation:

Friday Race: The course will be selected from the HYC Club Course card (Saturday races) and relayed to competitors on VHF channel 71 and will be displayed on the East Pier Starter's Hut. The course applicable to each race will be displayed for not less than 4 minutes before its start. This changes RRS 27.1.

Lambay Races: Courses shall be designated by numerals displayed on boards on the East Pier Starter's Hut and relayed to competitors on VHF channel 71. The course applicable to each race will be displayed for not less than 4 minutes before its start. This changes RRS 27.1.
The courses are listed on the Course Card.

Marks are described by letter(s) and the subscript 'p' or 's' thereafter directs that they be rounded to port or starboard respectively, except those marks in a □ (box) which are passing marks.

C11 Shortening Course:

Friday 1 June

RRS 32 shall apply to all races

Saturday 2 June

RRS 32 is changed in that the Race Committee may, at their discretion, shorten the course at any mark. They may also shorten the course at the Taylor Buoy or the Burren Perch at Lambay Island.

Should this be necessary, a Committee Boat/ Finishing Boat will take station north of the Taylor Buoy or west of the Burren Perch and display flag "S" superior to the class flag for the relevant class(es) to be shortened.

Instructions may also be given over the radio on Channel 71

C12 Finishing Time Limit

Friday 1 June

The Time Limit for all races is 2100. If a boat in a class finishes within this limit, the time limit for that class shall be extended to 2115.

Saturday 2 June

The Time Limit for all races is 1630. If a boat in a class finishes within this limit, the time limit for that class shall be extended to 1730. In the event of postponement(s) and/or general recall(s) the time limit(s) for races so affected shall be correspondingly extended. A boat which fails to finish within the time limit will be scored DNF. This changes RRS 35 and Appendix A4.1

C13 Finishing Line

The finish line, unless the course is shortened, shall be between a red/white pole [or mainmast] on the Committee Boat in the vicinity of Mark (F) displaying a blue flag, which shall be left to Starboard and the red vertical line on the East Pier Starter's Hut.

LAMBAY RACES – GENERAL CONDITIONS

C14 Starting Time Limit

A boat starting later than ten minutes after her starting signal will be scored DNS. This changes RRS Appendix A4.1.

C15 Re-crossing Start/Finish Lines [NP][DP]

All boats shall keep clear of the starting lines until their warning signal. Boats, having started and cleared their starting line, shall not re-cross that line while starts are in progress. Boats shall not cross any other starting line while starts are in progress. The Protest Committee may penalise a boat failing to comply with this sailing instruction with a score of its discretion, including DSQ.

EMERGENCY PROCEDURES AFLOAT

If an incident occurs during the regatta, the following procedure should be followed:

Go to VHF Channel 16 and broadcast the following (three times):

- 1. MAYDAY – if the boat is in distress**
- 2. PAN PAN – if the boat requires outside assistance**
- 3. PAN PAN MEDICO – if medical assistance is required**

In every case, state:

- The nature of the incident/ injury**
- The name and position of the boat**

Other issues can be reported to the respective Committee Boat, via course channels 77, 69 and 71 and advise the Race Officer of the issue.