

2024 TECHNICAL SHEET FOR COURSE CARDS – REV B

High Water - Howth (Local Time)

Tuesdays			Wednesdays			Saturdays		
Date	Time	Height	Date	Time	Height	Date	Time	Height
23-Apr	23:20	3.79m	24-Apr	12:38	3.98m	27-Apr	14:23	3.70m
30-Apr	17:00	3.17m	01-May	18:19	3.13m	04-May	21:46	3.73m
07-May	11:39	4.30m	* 10-May	13:53	3.98m	11-May	14:38	3.74m
14-May	17:20	3.07m	15-May	18:29	2.99m	18-May	21:25	3.30m
21-May	10:52	3.72m	22-May	23:55	3.91m	25-May	13:31	3.75m
28-May	15:55	3.41m	29-May	16:55	3.33m	01-Jun	20:17	3.52m
04-Jun	22:57	4.03m	05-Jun	11:17	3.97m	08-Jun	13:37	3.76m
11-Jun	15:54	3.32m	12-Jun	16:44	3.19m	15-Jun	19:32	3.12m
18-Jun	22:02	3.52m	19-Jun	22:46	3.69m	22-Jun	12:35	3.73m
25-Jun	14:55	3.68m	26-Jun	15:45	3.62m	29-Jun	18:39	3.48m
02-Jul	21:44	3.71m	03-Jul	22:39	3.85m	06-Jul	12:40	3.70m
09-Jul	14:43	3.55m	10-Jul	15:22	3.47m	13-Jul	17:31	3.19m
16-Jul	20:24	3.24m	17-Jul	21:22	3.40m	20-Jul	11:33	3.63m
23-Jul	13:55	3.94m	24-Jul	14:39	3.94m	27-Jul	17:05	3.65m
30-Jul	20:21	3.45m	31-Jul	21:28	3.54m	03-Aug	11:47	3.57m
06-Aug	13:41	3.73m	07-Aug	14:15	3.70m	10-Aug	15:56	3.44m
13-Aug	18:22	3.14m	14-Aug	19:36	3.18m	17-Aug	10:27	3.45m
* 22-Aug	14:18	4.19m	* 23-Aug	15:00	4.11m	24-Aug	15:45	3.94m
27-Aug	18:41	3.35m	28-Aug	20:00	3.32m	31-Aug	10:52	3.42m

** NOR 9: Due to low tide 08-May, 20 & 21-Aug racing transferred to Thursday or Friday*

400 & 500 Course Marks

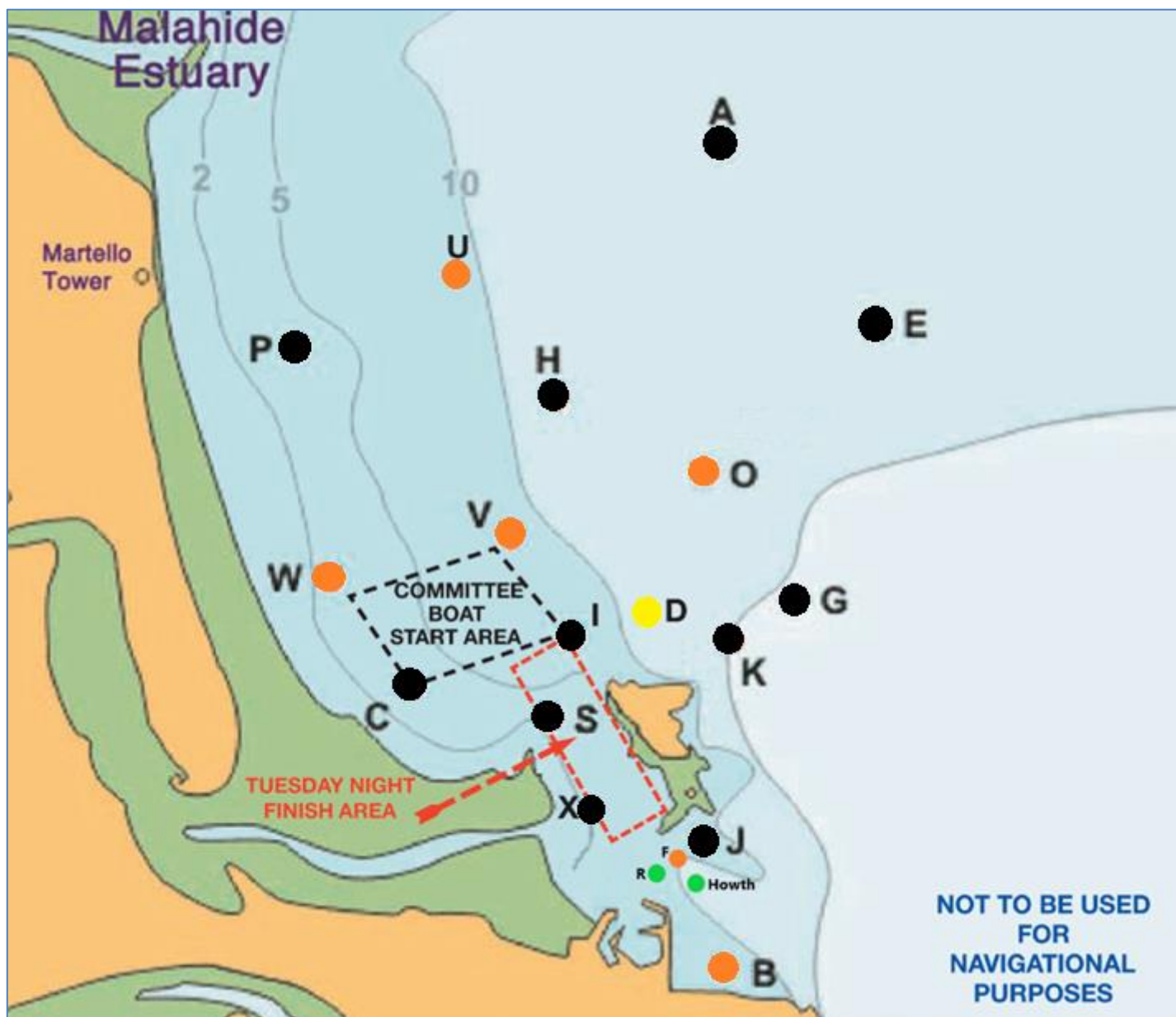
ID	Name	Shape	Colour
1	Windward	Inflatable	Black
2	Gybe	Round	Yellow
2	Offset	Round	Yellow
3	Leeward	Round	Orange
F	Finish	Round	Orange

Pier Course Boards

Wind Direction	Starting Line
Two digit	A South Rowan B Finish Mark C Howth Mark
read top to bottom corresponds to <u>line</u> on Course Card	Selected Course corresponds to <u>column</u> on Course Card

MARK DESCRIPTIONS / POSITIONS (Approx)

ID	Name	Shape	Colour	Latitude (N) Deg Min	Longitude (W) Deg Min
A	Apex	Conical	Black	53 26.76	06 03.26
B	Balscadden	Conical	Orange	53 23.30	06 03.26
C	Cush	Conical	Black	53 24.61	06 05.45
D	Dunbo	Conical	Yellow	53 24.73	06 03.85
E	East	Conical	Black	53 26.00	06 02.20
F	Finish	Cherry	Orange	Between Island and East Pier Starters Hut	
G	Garbh	Conical	Black	53 25.00	06 02.32
	Howth	IALA	Green	53 23.69	06 03.56
H	Hub	Conical	Black	53 25.71	06 04.43
I	Island	Conical	Black	53 24.70	06 04.36
J	Thulla	Conical	Black	53 23.80	06 03.40
K	Stack	Conical	Black	53 24.60	06 03.11
O	Osprey	Conical	Orange	53 25.41	06 03.52
P	Portmarnock	Conical	Black	53 25.63	06 05.80
Q	Rowan Rocks	IALA	Black	53 23.88	06 03.22
R	South Rowan	IALA	Green	53 23.78	06 03.88
S	Spit	Conical	Black	53 24.35	06 04.48
U	Ulysses	Conical	Orange	53 26.22	06 04.97
V	Viceroy	Conical	Orange	53 25.12	06 04.78
W	West	Conical	Orange	53 24.96	06 06.07
X	Xebec	Conical	Black	53 24.12	06 04.33
Z	Zephyr	Inflatable	Black	Upwind of Start Line	



Race Marks - Relative Bearings - Magnetic (approx)
The Relative Bearings are a guideline only.

	A	B	C	D	E	G	H	I	J	K	O	P	Q	S	U	V	W	X
A		183	216	196	146	168	220	207	185	184	192	236	185	203	248	215	229	200
B	003		319	352	019	024	347	336	357	010	002	331	010	331	347	340	321	328
C	036	139		085	058	081	029	084	126	091	055	348	121	117	010	038	314	127
D	016	172	265		043	078	347	266	170	110	023	308	161	227	342	307	282	212
E	326	199	238	223		190	264	237	204	207	238	263	202	225	284	246	252	220
G	348	204	261	258	010		305	259	214	236	306	289	211	249	314	281	275	239
H	040	170	209	167	084	125		180	168	151	125	265	164	187	334	205	238	184
I	021	156	264	086	057	079	000		148	101	039	317	140	195	349	332	287	172
J	005	177	306	350	024	034	348	328		018	004	326	062	317	345	334	312	305
K	004	190	270	290	027	056	331	281	198		350	303	190	256	332	304	288	242
O	012	182	235	203	058	126	305	219	184	170		279	180	215	319	256	260	207
P	056	151	168	128	083	109	085	138	146	123	099		143	151	040	130	194	153
Q	005	190	301	341	022	031	344	320	242	010	360	323		308	342	329	308	295
S	023	151	297	047	045	069	007	015	137	076	035	327	128		357	350	304	160
U	068	167	190	162	104	134	154	169	165	152	139	220	162	177		180	213	176
V	035	160	218	127	066	101	025	152	154	124	076	310	149	170	000		264	171
W	049	141	136	102	072	095	058	107	132	108	080	013	128	129	033	084		135
X	020	148	307	032	040	059	004	352	125	062	027	333	115	340	356	351	315	

