

# TECHNICAL SHEET FOR 2020 COURSE CARDS

## 2020 High Water - Howth (Local Time)

Tuesdays			Wednesdays			Saturdays		
Date	Time	Height	Date	Time	Height	Date	Time	Height
28-Apr	15:42	3.44m	29-Apr	16:38	3.27m	02-May	20:24	3.38m
05-May	23:10	4.17m	06-May	23:57	4.36m	09-May	13:45	4.23m
12-May	16:09	3.46m	13-May	17:10	3.22m	16-May	20:36	3.18m
19-May	22:48	3.66m	20-May	23:23	3.80m	23-May	12:47	3.87m
26-May	14:47	3.62m	27-May	15:34	3.49m	30-May	18:46	3.33m
02-Jun	21:55	3.89m	03-Jun	22:46	4.09m	06-Jun	12:42	4.11m
09-Jun	15:00	3.65m	10-Jun	15:48	3.46m	13-Jun	18:38	3.12m
16-Jun	21:24	3.38m	17-Jun	22:08	3.54m	20-Jun	11:45	3.74m
23-Jun	13:52	3.76m	24-Jun	14:38	3.71m	27-Jun	17:17	3.49m
30-Jun	20:29	3.62m	01-Jul	21:30	3.78m	04-Jul	11:39	3.89m
07-Jul	13:56	3.77m	08-Jul	14:39	3.67m	11-Jul	16:49	3.29m
14-Jul	19:32	3.17m	15-Jul	20:30	3.25m	18-Jul	10:35	3.53m
21-Jul	12:56	3.87m	22-Jul	13:40	3.91m	25-Jul	16:00	3.77m
28-Jul	18:55	3.51m	29-Jul	20:03	3.53m	01-Aug	10:38	3.62m
04-Aug	12:58	3.81m	05-Aug	13:36	3.80m	08-Aug	15:24	3.57m
11-Aug	17:32	3.21m	12-Aug	18:30	3.15m	15-Aug	09:15	3.27m
18-Aug	11:53	3.86m	*21-Aug	14:06	4.15m	22-Aug	14:50	4.10m
25-Aug	17:19	3.63m	26-Aug	18:25	3.48m	29-Aug	09:34	3.36m
01-Sep	12:02	3.75m	02-Sep	12:38	3.84m	05-Sep	14:15	3.82m

\* S.I. 3: Due to very low tide on 19th August racing is transferred to Friday 21st August.

## 400 & 500 Course Marks

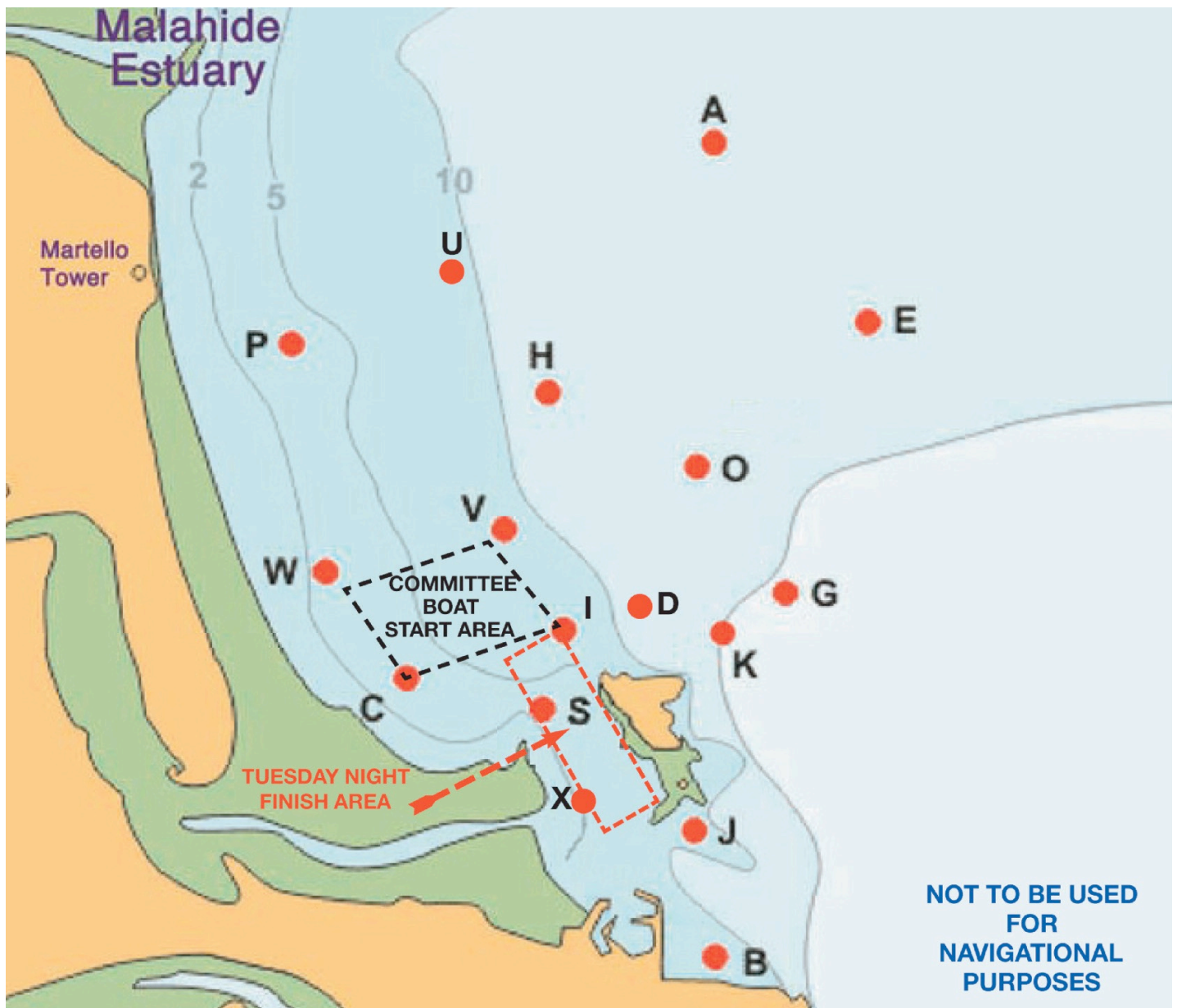
ID	Name	Shape	Colour
1	Windward	Inflatable	Black
2	Gybe	Round	Yellow
2	Offset	Round	Yellow
3	Leeward	Round	Orange
F	Finish	Round	Orange

## Pier Course Boards

<b>Wind Direction</b> Two Digit <b>Read</b> Top to Bottom ..... corresponds to <b>line</b> on Course Card	<b>Starting Line</b> A South Rowan B Finish Mark C Howth Mark
	<b>Selected Course</b> corresponds to <b>column</b> on Course Card

## MARK DESCRIPTIONS / POSITIONS (Approx)

ID	Name	Shape	Colour	Latitude (N) Deg Min	Longitude (W) Deg Min
A	Apex	Conical	Black	53 26.76	06 03.26
B	Balscadden	Conical	Orange	53 23.30	06 03.26
C	Cush	Conical	Black	53 24.61	06 05.45
D	Dunbo	Conical	Yellow	53 24.73	06 03.85
E	East	Conical	Black	53 26.00	06 02.20
F	Finish	Cylindrical	Orange	Between Island Mark and Howth Sound	
G	Garbh	Conical	Black	53 25.00	06 02.32
	Howth	IALA	Green	53 23.69	06 03.56
H	Hub	Conical	Black	53 25.71	06 04.43
I	Island	Conical	Black	53 24.70	06 04.36
J	Thulla	Conical	Black	53 23.80	06 03.40
K	Stack	Conical	Black	53 24.60	06 03.11
O	Osprey	Conical	Orange	53 25.41	06 03.52
P	Portmarnock	Conical	Black	53 25.63	06 05.80
Q	Rowan Rocks	Cardinal Mark	Black	53 23.88	06 03.22
R	South Rowan	IALA	Green	53 23.78	06 03.88
S	Spit	Conical	Black	53 24.35	06 04.48
U	Ulysses	Conical	Orange	53 26.22	06 04.97
V	Viceroy	Conical	Orange	53 25.12	06 04.78
W	West	Conical	Black	53 24.96	06 06.07
X	Xebec	Barrel	Black	53 24.12	06 04.33
Z	Zephyr	Inflatable	Black	Upwind of Start Line	



**Race Marks 2020 - Relative Bearings - Magnetic (approx)**  
**The Relative Bearings are a guideline only.**

	A	B	C	D	E	G	H	I	J	K	O	P	Q	S	U	V	W	X
A		183	216	196	146	168	220	207	185	184	192	236	185	203	248	215	229	200
B	003		319	352	019	024	347	336	357	010	002	331	010	331	347	340	321	328
C	036	139		085	058	081	029	084	126	091	055	348	121	117	010	038	314	127
D	016	172	265		043	078	347	266	170	110	023	308	161	227	342	307	282	212
E	326	199	238	223		190	264	237	204	207	238	263	202	225	284	246	252	220
G	348	204	261	258	010		305	259	214	236	306	289	211	249	314	281	275	239
H	040	170	209	167	084	125		180	168	151	125	265	164	187	334	205	238	184
I	021	156	264	086	057	079	000		148	101	039	317	140	195	349	332	287	172
J	005	177	306	350	024	034	348	328		018	004	326	062	317	345	334	312	305
K	004	190	270	290	027	056	331	281	198		350	303	190	256	332	304	288	242
O	012	182	235	203	058	126	305	219	184	170		279	180	215	319	256	260	207
P	056	151	168	128	083	109	085	138	146	123	099		143	151	040	130	194	153
Q	005	190	301	341	022	031	344	320	242	010	360	323		308	342	329	308	295
S	023	151	297	047	045	069	007	015	137	076	035	327	128		357	350	304	160
U	068	167	190	162	104	134	154	169	165	152	139	220	162	177		180	213	176
V	035	160	218	127	066	101	025	152	154	124	076	310	149	170	000		264	171
W	049	141	136	102	072	095	058	107	132	108	080	013	128	129	033	084		135
X	020	148	307	032	040	059	004	352	125	062	027	333	115	340	356	351	315	