



**monday.com ICRA National Championships 2023,  
incorporating Irish J24 National Championship 2023  
Howth Yacht Club  
8<sup>th</sup> – 10<sup>th</sup> September 2023**

**The Organising Authority is Howth Yacht Club CLG**

**Supported by Fingal County Council**



**2023 SAILING INSTRUCTIONS**

Final Sept 5 2023



## SI 1. RULES AND NOTICES

- 1.1 This regatta is governed by the rules as defined in The Racing Rules of Sailing (RRS) and the prescriptions of Irish Sailing.
- 1.2 These Sailing Instructions are supplemental to the Irish Cruiser Racing Association General Rules 2023 (GR), which shall apply in all cases, unless changed by these Sailing Instructions. In the event of a conflict, these sailing instructions shall prevail.
- 1.3 Competitors should note that Howth is a commercial harbour and that commercial vessels (including fishing vessels) have right of way in the navigation channels , inside and outside the harbour at all times.
- 1.4 GR1.5 Applies – all boats must register at the race office, Thurs Sept 7<sup>th</sup> 1700 -1900 or Friday 0930 - 1000

## SI 2. CLASS ALLOCATIONS AND START ORDER [NP]

Fleet	Class	Groupings	Class flag
Green	Class 0	A and B (1.036 and above)	Numeral 0
White	Class 1	C and D (1.035 to .986)	Numeral 1
	Class 2	E and F (0.985 to .936)	Numeral 2
Orange	Class 3	G and H (0.935 to .876)	Numeral 3
	Class NS	All non-spinnaker	Numeral 4
J24	J24 Class	J24 One Design	IC Flag J

### SI 3. SCHEDULE OF RACES

Fleet	Date	Races planned	Race Area	1st warning
Green Class 0	Friday	1	Coastal	1145
	Saturday	3	Inshore A (W/L)	1125
	Sunday	1	Coastal	1045
White Class 1 + 2	Friday	2	Inshore A (W/L)	1155
	Saturday	3	Inshore A (W/L)	1130
	Sunday	2	Inshore A (RTC)	1055
Orange Class 3 + NS	Friday	2	Inshore B (RTC)	1155
	Saturday	3	Inshore B (W/L)	1125
	Sunday	2	Inshore B (W/L)	1055
J24	Friday	Up to 4	Inshore C (W/L)	1125
	Saturday	Up to 4	Inshore C (W/L)	1025
	Sunday	Remaining races to complete series	Inshore C (W/L)	1025

- 3.1 On Sunday: If 2 races have been completed there will be no first warning signal after 1530hrs. Otherwise, there will be no first warning signal after 1630hrs
- 3.2 For the J24 class, nine races are scheduled and three races shall constitute a championship. This changes NOR 2.1

### SI 4. RACE AREAS

Race Area	Committee Vessel	VHF	Race Officer
Coastal	Star Point	77 alternative 74	David Lovegrove IRO
Inshore A	Star Point	77 alternative 74	David Lovegrove IRO
Inshore B	Blue Fox	68 alternative 69	Neil Murphy NRO
Inshore C	Sea Wych	72 alternative 73	Derek Bothwell NRO

- 4.1 Race areas may be combined and will be located north of Howth Harbour.

### SI 5. THE FINISH

**Coastal courses:** The finish line (unless shortened) will be the HYC finish line located off Howth East Pier. It will be between a pole (no blue flag displayed, this changes RRS Racing Signals) on the front of the HYC Starter's Hut and an orange mark, This changes GR 5.7.2

Boats *shall* broadcast their name and GPS track by AIS when finishing.

Boats shall record their finish time using GPS time adjusted for local time and declare it to race management before the end of the Protest Time Limit. They are requested to do this as soon as possible.

**Inshore A , B and C for W/L courses:** The finish line (unless shortened) will be between a red/white pole/staff on a finish vessel, displaying a blue flag and a finish mark (an orange cherry mark).

**Inshore A and B for RTC courses:** The finish line (unless shortened) will be located up wind of the last mark on the course and will be between a red/white pole/staff on a finish vessel, displaying a blue flag and a finish mark.

## SI 6 COMMUNICATION WITH COMPETITORS

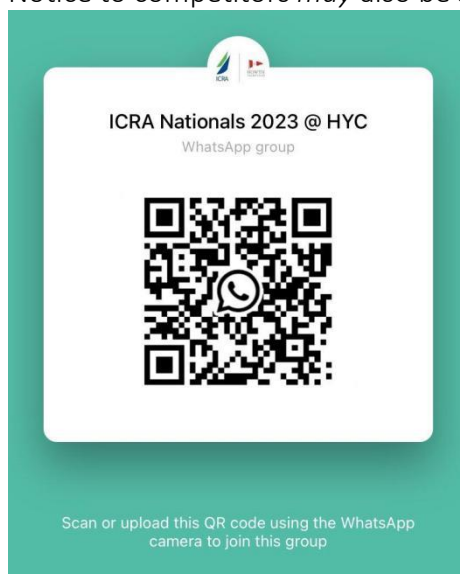
6.1 The Official Notice Board:

General information: <https://hyc.ie/icra-event-noticeboard>

Hearing notifications:

[https://www.racingrulesofsailing.org/events/5516/event\\_links?name=irish-cruiser-racing-association-national-championships](https://www.racingrulesofsailing.org/events/5516/event_links?name=irish-cruiser-racing-association-national-championships)

6.2 Notice to competitors *may* also be sent to the event WhatsApp group:



[NP]

6.3 Signals made ashore *will* be displayed on the event flagpole located at the top of the marina bridge.

## SI 7. SCORING

- 7.1 The ratings for each Class are as follows:  
Class 0: 1.036 to 1.155  
Class 1: 0.986 to 1.035  
Class 2: 0.936 to 0.985  
Class 3: 0.876 to 0.935  
Non-spinnaker Class 4: All ratings  
J24 Class – Scratch only
- 7.2 The ECHO Handicapper is Liam Lynch. Initial ECHO handicaps will be evaluated using the policy outlined at <https://cruiserracing.ie/technical/echo-handicap/>
- 7.3 ECHO Handicaps will be updated after each race (ECHO 7. U)
- 7.4 The weighting given to a boats performance in the Progressive ECHO calculation (ECHO 7. W) is 25%

## SI 8 Risk Statement

- 8.1 Rule 3 of the Racing Rules of Sailing states: ‘The responsibility for a boat's decision to participate in a race or to continue racing is hers alone. “Sailing” is by its nature an unpredictable sport and therefore inherently involves an element of risk. By taking part in the event, each competitor agrees and acknowledges that:
- a. They are aware of the inherent element of risk involved in the sport and accept responsibility for the exposure of themselves, their crew and their boat to such inherent risk whilst taking part in the event;
  - b. They are responsible for the safety of themselves, their crew, their boat and their other property whether afloat or ashore.
  - c. They accept responsibility for any injury, damage or loss to the extent caused by their own actions or omissions.
  - d. Their boat is in good order, equipped to sail in the event and they are fit to participate.
  - e. The provision of a race management team, patrol boats and other officials and volunteers by the event organizer does not relieve them of their own responsibilities.
  - f. The provision of patrol boat cover is limited to such assistance, particularly in extreme weather conditions, as can be practically provided in the circumstances.



- g. It is their responsibility to familiarise themselves with any risks specific to this venue or this event drawn to their attention in any rules and information produced for the venue or event and to attend any safety briefing held for the event.
- h. For offshore races, they are responsible for ensuring that their boat is equipped and seaworthy so as to be able to face extremes of weather; that there is a crew sufficient in number, experience and fitness to withstand such weather; and that the safety equipment is properly maintained, stowed and in date and is familiar to the crew .

## APPENDIX A. COURSES AND MARKS

### A1. WINDWARD / LEEWARD (FLAG 'W')

#### A1.1 COURSE SIGNALS

##### A1.1.1 Inshore A & B (Cruiser-Racer Classes)

When upper and lower windward marks are laid:

Courses starting with A use the upper windward mark.

Courses starting with B use the lower windward mark.

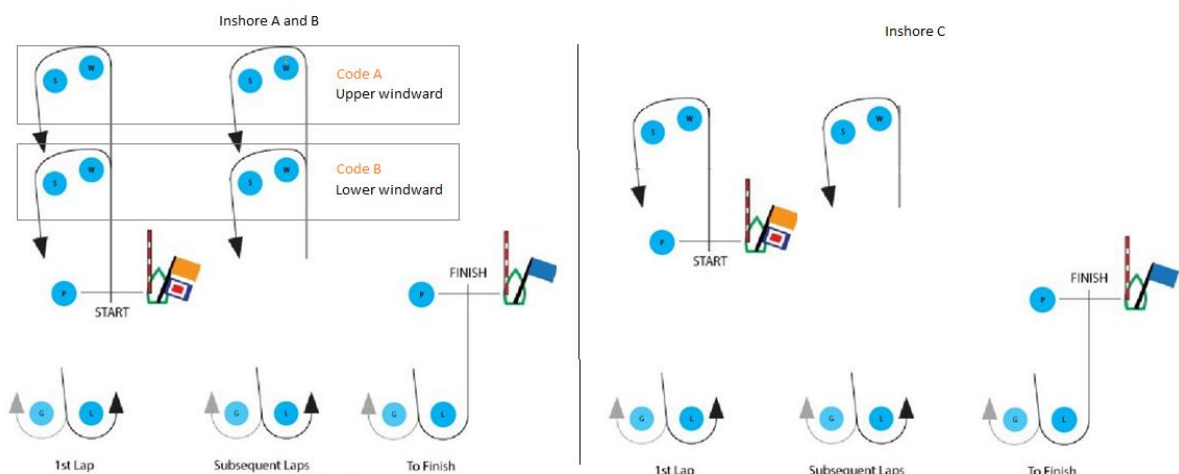
The number of rounds will be signalled by the digit that follows the A or B course designation

##### A1.1.2 Inshore C (J24 One Design Class)

The number of rounds will be signalled using a board on the committee vessel

#### A1.2 MARK LOCATIONS AND COLOURS

Mark	Inshore A	Inshore B	Inshore C
Start mark	Orange pillar mark	Orange pillar mark	Orange pillar mark
Upper windward (UW) Spreader (S)	Large orange dumpy	Large yellow dumpy	Orange pyramid mark
Lower windward (LW) Spreader (S)	Large Black dumpy	Large black dumpy	NOT LAID
Gate marks (G)	Large orange dumpy	Large yellow dumpy	Orange pyramid mark
Finish mark (F)	Small orange cherry	Small orange cherry	Small cherry





**The Courses to be sailed are:**

A1: Start - UW-S-G-F

A2; Start - UW-S-G-UW-s-G-F

A3; Start: -UW-S-G-UW-s-G-UW-s-G-F

B1: Start: -LW-S-G-F

B2: Start:- LW-S-G-LW-S-G-F

B3: Start: - LW-S-G-LW-S-G-LW-S-G-F

In the event that only a single gate mark is set, it shall be left to PORT



## A2. ROUND THE CANS (FLAG 'R')

### A2.1 COURSE SIGNALS

The course for the Round the Cans races will be selected from a list of courses, which form part of these sailing instructions. The selected course will be displayed by three number boards. The first two numbers are read down the left hand column, while the third number is read along the top of the chart. In addition, the race committee may select a course from the list of marks shown in Sections 2,3 and 3.2 of the sailing instructions and displayed on a board on the committee boat. In all cases, the course will be broadcast on the relevant VHF channel for that course.

### A2.2 MARK ORDER

When the following marks are passed by a leg of the course:

South Rowan shall be passed to the west or south

Rowan Rocks shall be passed to the east or south

Spit Mark (S) shall be passed to the east or north

Round the Cans course card can be found on <https://hyc.ie/icra-race-noticeboard> please download

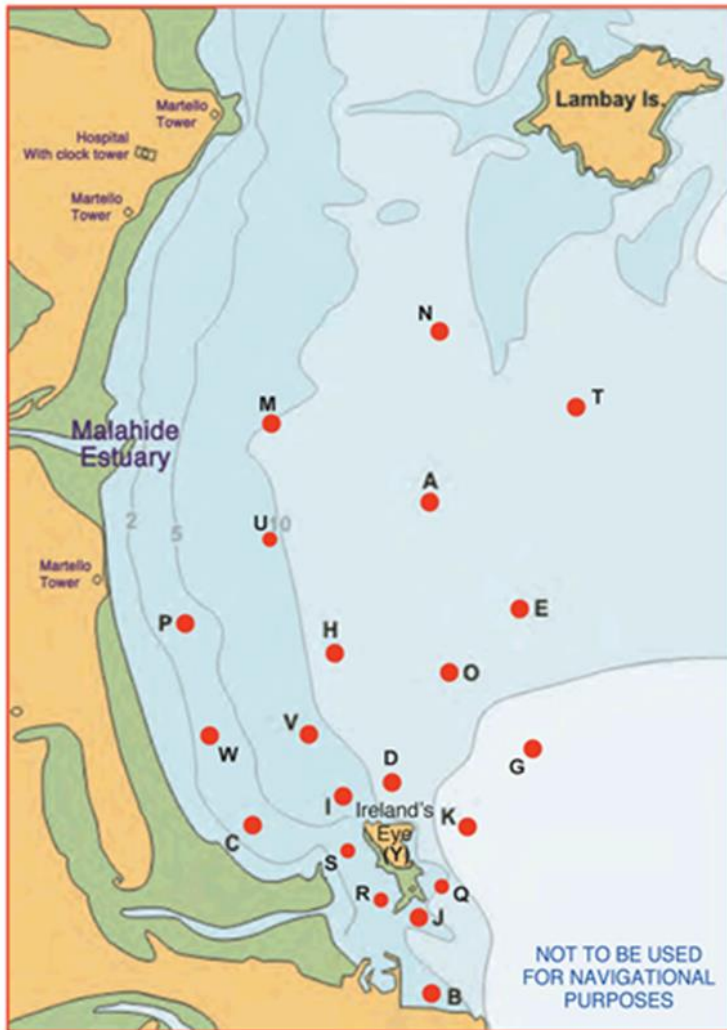
### Race Marks - Relative Bearings - Magnetic (approx) The Relative Bearings are a guideline only.

	A	B	C	D	E	G	H	I	J	K	O	P	Q	S	U	V	W	X
A		183	216	196	146	168	220	207	185	184	192	236	185	203	248	215	229	200
B	003		319	352	019	024	347	336	357	010	002	331	010	331	347	340	321	328
C	036	139		085	058	081	029	084	126	091	055	348	121	117	010	038	314	127
D	016	172	265		043	078	347	266	170	110	023	308	161	227	342	307	282	212
E	326	199	238	223		190	264	237	204	207	238	263	202	225	284	246	252	220
G	348	204	261	258	010		305	259	214	236	306	289	211	249	314	281	275	239
H	040	170	209	167	084	125		180	168	151	125	265	164	187	334	205	238	184
I	021	156	264	086	057	079	000		148	101	039	317	140	195	349	332	287	172
J	005	177	306	350	024	034	348	328		018	004	326	062	317	345	334	312	305
K	004	190	270	290	027	056	331	281	198		350	303	190	256	332	304	288	242
O	012	182	235	203	058	126	305	219	184	170		279	180	215	319	256	260	207
P	056	151	168	128	083	109	085	138	146	123	099		143	151	040	130	194	153
Q	005	190	301	341	022	031	344	320	242	010	360	323		308	342	329	308	295
S	023	151	297	047	045	069	007	015	137	076	035	327	128		357	350	304	160
U	068	167	190	162	104	134	154	169	165	152	139	220	162	177		180	213	176
V	035	160	218	127	066	101	025	152	154	124	076	310	149	170	000		264	171
W	049	141	136	102	072	095	058	107	132	108	080	013	128	129	033	084		135
X	020	148	307	032	040	059	004	352	125	062	027	333	115	340	356	351	315	

### A2.3 MARK LOCATION AND COLOUR

#### Racing Marks (Approximate)

ID	Name	Shape	Colour	Deg Min	Deg Min
A	Apex	Conical	Black	53 26.76	06 03.26
B	Balscadden	Conical	Orange	53 23.30	06 03.26
C	Cush	Conical	Black	53 24.61	06 05.45
D	Dunbo	Conical	Yellow	53 24.73	06 03.85
E	East	Conical	Black	53 26.00	06 02.20
G	Garbh	Conical	Black	53 25.00	06 02.32
H	Hub	Conical	Black	53 25.71	06 04.43
I	Island	Conical	Black	53 24.70	06 04.36
J	Thulla	Conical	Black	53 23.80	06 03.40
K	Stack	Conical	Black	53 24.60	06 03.11
M	Malahide	Conical	Black	53 27.23	06 05.59
N	North	Conical	Black	53 27.99	06 03.40
O	Osprey	Conical	Orange	53 25.41	06 03.52
P	Portmarnock	Conical	Black	53 25.63	06 05.80
Q	Rowan Rocks	IALA	Black	53 23.88	06 03.22
R	South Rowan	IALA	Green	53 23.78	06 03.88
S	Spit	Conical	Black	53 24.35	06 04.48
T	Talbot	Conical	Black	53 27.31	06 01.30
U	Ulysses	Conical	Orange	53 26.22	06 04.97
V	Viceroy	Conical	Orange	53 25.12	06 04.78
W	West	Conical	Black	53 24.96	06 06.07
X	Xebec	Barrel	Black	53 24.12	06 04.33
Y	Ireland's Eye	Island			
Z	Zephyr	Inflatable	Black	Upwind of Start Line	



### A3. COASTAL COURSES (FLAG O)

#### A3.1 COURSE SIGNALS

The course shall be signalled by displaying a list of marks to be rounded on a board on the committee vessel. It will also be announced on the relevant VHF channel.

#### A3.2 MARK LOCATIONS AND COLOURS

The finish is the HYC starters hut on the east pier

The finish distance mark is an orange buoy

The race committee may lay virtual marks and will broadcast the latitude and longitude on VHF.

There will be designated as: VM1, VM2 and VM3

Where virtual marks are used, a yacht shall provide photographic evidence of being on the course side of the virtual mark/s and this photograph should be sent with the yacht's name to 0862382919 within the protest time limit.

All IALA shall be passed on the required side.

Coastal courses may also include the marks in A2.3

COASTAL MARKS	Approx. Position			
	Mark Name	Latitude		Longitude
HYC East - Black Conical (E)	N53°	26.00	W6°	02.20
HYC Portmarnock - Black Conical (P)	N53°	25.63	W6°	05.80
East Rosbeg (ER)	N53°	21.00	W6°	03.45
Bray Outfall (BO)	N53°	13.25	W6°	04.49
East Kish (EK)	N53°	14.34	W5°	53.58
Shanganagh Outfall (SO)	N53°	14.90	W6°	05.06
North Kish (NK)	N53°	20.00	W5°	56.43
North Burford (NB)	N53°	20.51	W6°	01.50
South Burford (SB)	N53°	18.42	W6°	01.28
Bennet Bank (BB)	N53°	20.17	W5°	55.13
Greystones Outfall (GO)	N53°	08.44	W6°	02.53
Moulditch (MD)	N53°	08.43	W6°	01.23
Breaches BC)	N53°	05.72	W5°	59.86
West Codling (WC)	N53°	06.97	W5°	54.56
East Codling (EC)	N53°	08.52	W5°	47.12
Lambay Island (Y) *				

**\* When rounding Lambay Island, boats shall pass to the west of the Burren Perch and to the North of the Tailor Buoy.**

Coastal courses may also include the marks in Section 2.3

APPROX POSITIONS OF ADDITIONAL COASTAL COURSE MARKS

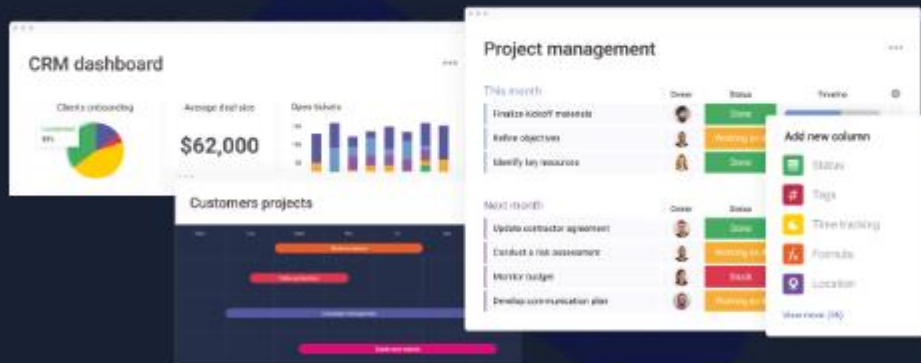


**Manage anything. Even sailing.**



**provident**  **mondaypartner**

**PROUD SPONSORS OF THE  
monday.com ICRA National Championships 2023**



Scan to sign up to an exclusive  
Crew & Boat Management Solution  
powered by monday.com

