

PORSCHE



SAILING INSTRUCTIONS

FRIDAY 24th MAY, SATURDAY 25th MAY and
SUNDAY 26th MAY 2024

Organised by:
HOWTH YACHT CLUB CLG

RACE OFFICERS

Fleet 1: Committee Vessel: Star Point. Race Officer: David Lovegrove IRO

Fleet 2: Committee Vessel: Sea Wych. Race Officer: Derek Bothwell NRO

TIDAL INFORMATION

High water at Howth:

Friday 24 May: HW 1250h 3.80M

Saturday 25 May: 1331h 3.75M

Sunday 26 May: 1414h 3.65M

SECTION A: GENERAL INSTRUCTIONS

The notation '[NP]' in a rule of the sailing instructions (SIs) means that a boat may not protest another boat for breaking that rule. This changes RRS 60.1(a).

A1 Rules

The races shall be governed by the Racing Rules of Sailing (RRS). RRS Appendix T (Arbitration) will apply.

A2 Notices to Competitors

Notices to competitors will be posted on the Official Notice Board located in the archway beside the Marina Office and may be communicated through the Regatta WhatsApp Group.

A3 Change of Sailing Instructions

Changes to Sailing Instructions will be posted not later than two hours before the scheduled start of the first race so affected. Changes to the schedule of races, will be posted before 2000hrs on the evening before such change is applicable. Flag L displayed on the flagpole at the top of the marina bridge denotes that a change of Sailing Instructions has been made.

A4 Signals Made Ashore

Signals made ashore will be displayed on the flagpole at the top of the marina bridge.

When flag AP is displayed ashore "one minute" is replaced with "not less than 60 minutes" in Race Signal AP. This changes RRS "Race Signals".

A5 Protests

Protests and requests for redress shall be lodged through the Online Protest Portal https://www.racingrulesofsailing.org/events/7555/event_links?name=wave-regatta

The Protest Time Limit is 90 minutes from the time of finish of the last boat in each of the fleets as appropriate. This time limit shall be extended to two hours in the event of the race being finished at either the Taylor Rock Buoy or the Burren Perch at Lambay Island. These times will be posted on the Online Protest Portal.

Notices of protests by the Race Committee, Technical Committee or Protest Committee will be posted before the end of the protest time limit to inform boats under RRS 61.1(b).

The time and place of Protest Hearings will be initially posted on the Online Protest Portal within 15 minutes of the protest time limit. The listing of a boat on this schedule shall constitute informing her of a hearing under RRS 63.2. Parties involved shall present themselves and their witnesses at the time and place indicated on the schedule.

On the last day of scheduled racing a request for a reopening of a hearing under RRS 66 shall be submitted via the Online Protest Portal, as follows:

- Within the protest time limit if the party requesting reopening was informed of the decision on the previous day
- No later than 30 minutes if the party requesting reopening was informed of the decision on that day
- If no racing has taken place that day, no later than 30 minutes after 'AP over A' is displayed ashore. This changes RRS 66.

To request correction of an alleged error in posted race or series results, a boat shall complete a scoring enquiry via the Online Protest Portal.

[DP] Penalties for a breach of the class rules may, at the discretion of the protest committee, be less than disqualification.

A6 Arbitration

If a party is not present at an arbitration meeting, any party that was present may take a Post-Race Penalty at any time until the Protest Committee has completed taking evidence. This changes RRS T1 (a).



REGATTA

A7 Navigation Marks and Obstructions

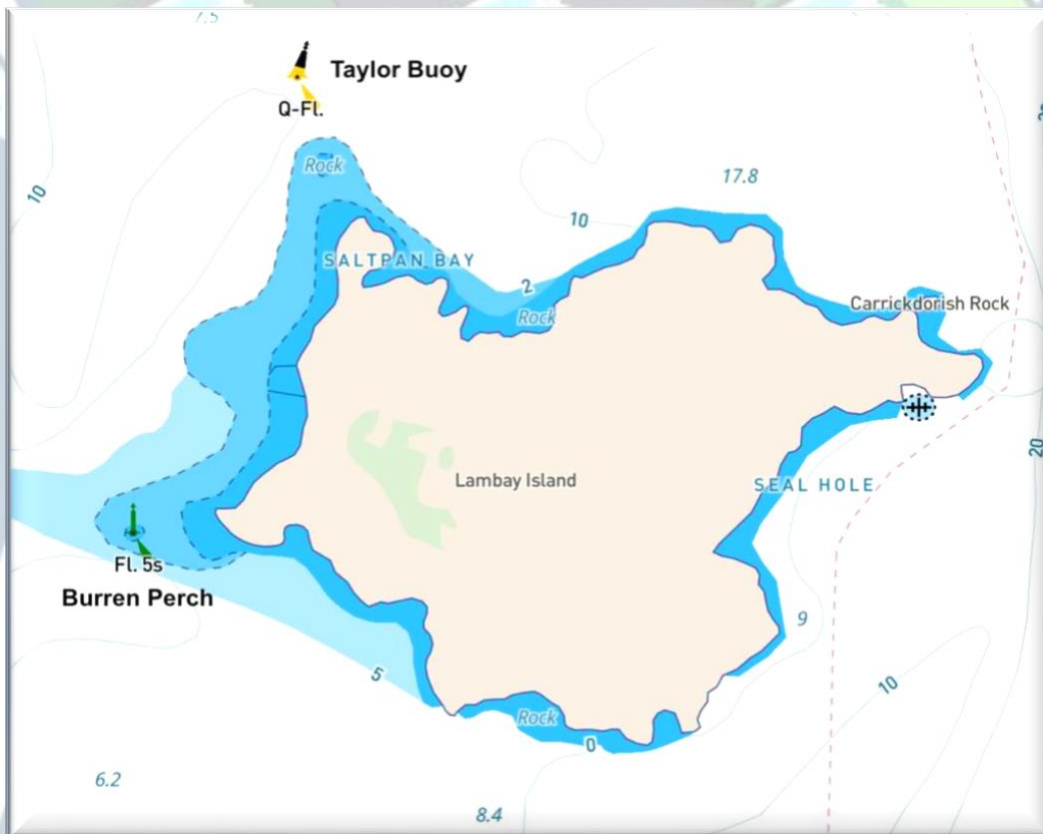
The Navigation Marks in and around Howth Sound shall be left as follows –

- South Rowan Buoy: to be passed to the West and South
- Howth Buoy: to be passed to the South and East
- Rowan Rocks Buoy: to be passed to the East and South
- HYC Spit Mark: to be passed to the East (See Appendix for approx. location)

Any part of Ireland's Eye or Lambay Island capable of being touched while racing is designated as an obstruction.

When rounding Lambay Island, boats shall pass outside the Taylor Buoy and Burren Perch and are advised to give both a wide berth.

In rounding Lambay Island, Class 0, 1 & 2 shall sail to the West and North of Mark 1 and to the North and East of Mark 2.



A8 Radio Communications

Competitors are advised to keep a listening watch on VHF Channel 77 for Star Point and Channel 72 for Sea Wych, where information relevant to racing may be broadcast. Should this information be broadcast, it shall not constitute outside assistance and shall not be the subject of any protest or claim for redress. Failure to broadcast this information shall not be the basis for any claim for redress. This changes RRS 62.1(a)

[NP][DP] Competitors who retire from a race shall inform the Race Committee promptly by radio on Channel 77 or

72 as appropriate. Competitors without radio should inform the Race Office on coming ashore.

A9 Prize Giving

The approximate time of the prize-giving for the Lambay Races will be 1800 on Saturday 25 May. The final prize-giving will be held on Sunday 26 May at 1800.

A10 Safety

Competitors participate entirely at their own risk; see Fundamental Rule 3, Decision to Race and the Irish Sailing Safety Booklet. Open boat entrants are referred to relevant Class regulations. The wearing of suitable personal flotation devices on all boats is strongly recommended at all times.

The responsibility for the safety of competing boats and their crews lies solely with the said competitors. Howth Yacht Club CLG. and/or the Organising Committee will not accept any liability for material damage, personal injury or death sustained in conjunction with, prior to, during, or after racing.

A11 Insurance

Each participating boat shall be insured with adequate, appropriate, valid, third-party liability insurance, valid for the duration of the Wave Regatta.

A12 Equipment Inspection (For IRC classes only, excluding Non-Spinnaker and one design classes)

Equipment inspection may be carried out at any time during the event.

A competitor subject to an on-the-water equipment inspection will be signalled from a RIB by the Race or Technical Committee and the boat should follow their instructions.

A competitor failing an equipment inspection may be subject to protest under RRS60.4.

A boat that fails an equipment inspection a second or more times will be scored DNE for all races sailed on the day of the infringement (or the day prior if the infringement is detected before racing on the next day) without a hearing. This changes RRS 63.1 and Appendix A5.

A13 Clean Regatta

WAVE is a "Clean Regatta" and is fully supportive of sustainability of our land and marine environments. As plastic is one of the primary pollutants of the sea, all competitors are asked to bring their own water bottles and chilled, filtered water will be available at the entrance to the marina. We would also ask that you try and eliminate any plastic wrapping in your consumables on board and to recycle any necessary plastic when ashore.

The organisers encourage competitors and supporters to do their bit on land by choosing to cycle, car share or use public transport to get to the event.

A14 Registration

Mandatory registration will take place at the Regatta office in Howth Yacht Club on

Thursday 10th September 19:00 – 21:00

Friday 11th September 08:00 – 10:00

Saturday 12th September 08:00 – 09:30

SECTION B: FLEETS and RACES 3 DAY REGATTA

B1 The following pennants shall identify the Classes:

Class 0	- Numeral 0
Class 1	- Numeral 1
Class 2	- Numeral 2
Class 3	- Numeral 3
Class 4 Non-Spinnaker 1	- Numeral 4
Class 5 Non-Spinnaker 2	- Numeral 5

The same numeral flags will be used by the Race Committee as the Class flag for each Fleet. Boats shall display prominently their Class pennant from their backstay at all times while racing. Any boat not doing so shall be scored DNF, this changes RRS 63.1 and RRS Appendix A5 (scores determined by the Race Committee).

Other boats not in Classes 0-5 are not required to display Class pennants.

B2 The fleets will comprise the following Classes:

Fleet 1: Classes 0, 1 and 2 shall constitute Fleet 1- Committee Vessel: Star Point.

Fleet 2: Classes 3, 4 and 5 shall constitute Fleet 2- Committee Vessel: Sea Wych.

B3 Class Allocations & Series:

Class allocations and splits will be advised at the latest by 9:00am on Wednesday 22nd.

B4 Start Times:

First warning signal will be at:

Friday 24 May: 1055 All fleets

Saturday 25 May: 1025 All Fleets

Sunday 26 May: 1055 All fleets

The Race Committees will use VHF to notify the Fleets of the respective courses of the approximate time for commencement of the starting sequence for races after the first races on Friday and Sunday.

There will be no starts after 1500 on Sunday 26 May.

B5 Intended Start Sequence:

<i>Fleet 1:</i>	<i>Flag</i>
Class 0	No. 0
Class 1	No. 1
Class 2	No. 2

<i>Fleet 2:</i>	<i>Flag</i>
Class 3	No. 3
Class 4 Non-Spinnaker	No. 4
Class 5 Non-Spinnaker	No. 5

B6 Schedule of Races:

Friday 24 May:

Fleet 1: Three races are scheduled (Windward/Leeward, Committee Vessel Star Point)

Fleet 2: Two races are scheduled (Round the Cans, Committee Vessel Sea Wych)

Saturday 25 May:

Fleet 1: One race Lambay Race (Committee Vessel Star Point)

Fleet 2: One race Lambay Race (Committee Vessel Sea Wych)

Sunday 26 May:

Fleet 1: Two races are scheduled (Round the Cans, Committee Vessel Star Point)

Fleet 2: Three races are scheduled (Windward/Leeward, Committee Vessel Sea Wych)

The Race Committee may, at its discretion, amend the above schedule depending on the prevailing weather conditions.

B7 Starting Area

The starting area for all courses will be North and/or West of Ireland's Eye. The Committee Vessels will broadcast their positions on the relevant VHF Channels

B8 Starting Lines

The starting line shall be between a red/white pole (or main mast) on a Committee Vessel (to be passed to starboard) that will display an orange flag and an orange cylindrical start mark.

B9 Starting Time Limit

A boat starting later than ten minutes after her starting signal will be scored DNS. This changes RRS Appendix A4.1.

B10 Course Designation:

The course to be sailed by a Class will be signaled no later than the Preparatory Signal for that Class. This changes RRS 27.1.

Round the Cans course will be indicated by displaying IC Flag R
Windward/Leeward course will be indicated by displaying IC Flag W

B11 Windward/Leeward course:

The number of rounds to be sailed on the windward/leeward course will be signaled by the display of a number board on the Committee Vessel and will indicate as follows - marks to be rounded to port (with the exception of the gate) in the following order:

No 1: **1-2-G-F**

No 2: **1-2-G-1-2-G-F**

No 3: **1-2-G-1-2-G-1-2-G-F**

For Class 0, a yellow inflatable mark will be laid to windward of Marks 1 & 2 and called Mark 0. For Class 0, marks to be rounded to port (with the exception of the Gate) in the following order:

No 1: **0-G-F**

No 2: **0-G-0-G-F**

No 3: **0-G-0-G-0-G-F**

In the above courses, Mark G indicates a leeward gate, as per the indicative course diagram. Should both gate marks not be laid, boats shall regard the single mark as a port rounding mark.



B12 Change of Course:

To maintain the integrity of the course, the Race Committee may make small changes to the positions of the marks. These will not be signaled. This changes RRS 33.

B13 Description of Marks for Windward/Leeward Courses:

- Start Mark: This will normally be an orange cylindrical mark.
- Course marks:
- Fleet 1: These will normally be orange inflatable marks for Classes 1 & 2. For Class 0, Mark 0 will be a yellow inflatable mark.
- Fleet 2: These will normally be black inflatable marks.
- Finish mark: This will normally be a small orange spherical mark.

B14 Round the Cans Courses:

The courses to be sailed on the Round the Cans races will be selected from the marks indicated on Appendix I which shall form part of these Sailing Instructions.

For all Round the Cans races, a Windward mark (large orange for Fleet 1 and large black for Fleet 2) will be laid approximately to windward of the Committee vessel. This shall be rounded to Port as the first mark on the course. Thereafter, boats shall sail to the first mark as indicated on the course displayed and continue to sail around the marks in the order as displayed.

Should the Committee vessel be displaying a White Flag, boats shall disregard the Windward mark (or it may not be laid) and sail directly to first mark on the course as displayed.

B15 Shortened course:

1 For the Round the Cans races, RRS 32 shall apply.

2 For Windward/Leeward, in addition to the provisions of RRS 32, the course may be shortened by the Race Committee positioning a mark boat at either Mark 2 (Mark 1 for Class O) or G, displaying IC Flag F and making sound signals. Boats shall then sail directly to the finish line from that mark.

B16 Re-crossing Start Line [NP][DP]

All boats shall keep clear of the starting line until their warning signal. Boats, having started and cleared their starting line, shall not re-cross that line while starts are in progress. Boats shall not cross any other starting line while starts are in progress.

B17 Finish Lines

The finishing line, unless shortened as in B15 above, will be between the red and white pole or mainmast displaying a blue flag on the finishing vessel and the finishing mark.

For Windward/Leeward races, the finish line will be as shown on the course diagram.

For Round the Cans races, the finish line will be approximately upwind of the last mark on the course.

NOTE: the finishing vessel may be different to the start vessel.

B18 Time Limits:

The time limits shall be as follows:

Fleets 1 and 2: the time limit for all races (except the Lambay Races) shall be 20 minutes after the first boat sails the course and finishes.

The Time Limit for all fleets for the Lambay Races is 1500. If a boat in a class finishes within this limit, the time limit for that class shall be extended to 1530. In the event of postponement(s) and/or general recall(s) the time limit(s) for races so affected shall be correspondingly extended. A boat which fails to finish within the time limit will be scored DNF. This changes RRS 35 and Appendix A4.1

B19 Scoring:

2 races are required to be completed to constitute a series.

If four or more races are sailed, a boat may discard her worst score except her score in the Lambay Race, which is non-discardable.

SECTION C: LAMBAY RACES

Section C supplements Sections A and B for the Lambay Races but, in the event of a conflict, Section C shall be deemed to take precedence for the Lambay Races.

C1 Starting Time Limit

A boat starting later than ten minutes after her starting signal will be scored DNS. This changes RRS Appendix A5.1.

C2 Re-crossing Start/Finish Lines [NP][DP]

All boats shall keep clear of the starting line until their warning signal. Boats, having started and cleared their starting line, shall not re-cross that line while starts are in progress. Boats shall not cross any other starting line while starts are in progress.

Boats shall not cross any finishing lines other than their own when the Committee Vessel on station at the end of the line encountered is displaying a Blue and/or an S flag. Competitors are requested to avoid interfering with boats that may be attempting to finish on such finish lines.

C3 Starting Area

The starting area will be North and/or West of Ireland's Eye

C4 Starting Line

The starting line shall be between a red/white pole (or main mast) on a Committee Vessel (to be passed to starboard) that will display an orange flag and a cylindrical orange start mark.

C5 Start Sequence:

	'StarPoint'	
<i>Fleet 1</i>	<i>Flag</i>	<i>Start</i>
Pupeteer	A	10:30
Class 0	No. 0	10:40
Class 1	No. 1	
Class 2	No.2	

Vessel: **StarPoint**



Vessel: **Sea Wych**

<i>Fleet 2</i>	<i>'Sea Wych'</i>	<i>Start</i>
Squib	Flag K	10:30
Howth 17	C	
Class 3	No. 3	10:45
Class 4 Non-spinnaker	No. 4	
Class 5 Non-spinnaker	No. 5	



C6 Course Designation

1. The courses to be sailed will be selected from the marks indicated on Appendix I to these sailing instructions or from the Lambay Course Card.
2. A Windward mark (large orange for Fleet 1, large yellow for Puppeteer class), large black for Fleet 2 will be laid approximately to windward of the Committee vessel. This shall be rounded to Port as the first mark in all races, Thereafter, boats shall sail to the first mark as indicated on the course displayed and continue to sail around the marks in the order as displayed. Should the Committee vessel be displaying a White Flag, boats shall disregard the Windward mark (or it may not be laid) and sail directly to the first mark on the course as displayed.
3. The course to be sailed will be displayed on the committee boat and broadcast on VHF Channel 77 for Star Point and 72 for Sea Wych.

C7 Shortened course:

RRS 32 shall apply.

C8 Finishing Line

Unless the course is shortened, there will be two finish lines:

Classes: 0, 1, 2 and Puppeteers will finish in the vicinity of the Rowan Rocks Buoy and the finish line will be between a red/white pole (or mainmast) displaying a blue flag on the committee vessel which shall be left to starboard and the finish mark.

Classes: 3, 4, 5, Squib and Howth 17 will finish in the vicinity of Howth Sound and the finish line will be between a red/white pole (or mainmast) displaying a blue flag on the committee vessel which shall be left to starboard and the finish mark.

C9 Time Limits:

The Time Limit for all fleets for the Lambay Races is 1700. If a boat in a Class finishes within this limit, the time limit for that Class shall be extended to 1730. In the event of postponement(s) and/or general recall(s), the time limit(s) for races so affected shall be correspondingly extended. A boat that fails to finish within the above time limits will be scored 'DNF' without a hearing. This changes RRS 35, RRS 63.1, RRS Appendix A4 and A5.

EMERGENCY PROCEDURES AFLOAT

If an incident occurs during the Regatta the following procedure should be followed:
Go to VHF Channel 16 and broadcast the appropriate message from the list below three times:

1. MAYDAY if the boat is in distress
2. PAN PAN if the boat requires outside assistance
3. PAN PAN MEDICO if medical assistance is required In every case, state:
 - The nature of the incident / injury
 - The name and position of the boat

Other issues can be reported to the Committee Vessel for the fleet the boat is competing in, using the designated VHF Channel for the fleet, and the Race Officer advised of the incident.

REGATTA

The organising team and Howth Yacht Club would like to thank our principal sponsors and our commercial partners for helping put Wave Regatta together in 2024.

PORSCHE

**Comhairle Contae
Fhine Gall**
Fingal County
Council



**The
Wright
Group**

Creating Memorable Experiences



euro car parks

 **Bytek** IT SOLUTIONS

**CASSIDY
TRAVEL**

CKS

provident

 **sugarcrm**

WAVE REGATTA

APPENDIX I

TO SAILING INSTRUCTIONS

MARK DESCRIPTIONS / POSITIONS (Approx)				<i>Latitude (N)</i>	<i>Longitude (W)</i>
<i>ID</i>	<i>Name</i>	<i>Shape</i>	<i>Colour</i>	<i>(Deg Min)</i>	<i>(Deg Min)</i>
A	Apex	Conical	Black	53 26.76	06 03.26
C	Cush	Conical	Black	53 24.61	06 05.45
D	Dunbo	Conical	Yellow	53 24.73	06 03.85
E	East	Conical	Black	53 26.00	06 02.20
G	Garbh	Conical	Black	53 25.00	06 02.32
	Howth	IALA	Green	53 23.69	06 03.56
H	Hub	Conical	Black	53 25.71	06 04.43
I	Island	Conical	Black	53 24.70	06 04.36
J	Thulla	Conical	Black	53 23.80	06 03.40
K	Stack	Conical	Black	53 24.60	06 03.11
O	Osprey	Conical	Orange	53 25.41	06 03.52
P	Portmarnock	Conical	Black	53 25.63	06 05.80
Q	Rowan Rocks	IALA	Black	53 23.88	06 03.22
R	South Rowan	IALA	Green	53 23.78	06 03.88
S	Spit	Conical	Black	53 24.35	06 04.48
U	Ulysses	Conical	Orange	53 26.22	06 04.97
V	Viceroy	Conical	Orange	53 25.12	06 04.78
W	West	Conical	Orange	53 24.96	06 06.07
1	Taycan	Inflatable	Orange	53 31.00	06 02.00
2	Macan Electric	Inflatable	Orange	53 31.00	06 00.00
3	Cayenne	Inflatable	Orange	53 26.00	06 00.00

In addition to the above, IALA marks may be used for Round the Cans Class 0.

The above locations are the planned positions of marks. Weather, tide and other factors may result in the actual locations varying from the listed positions so locations shall be treated as indicative rather than definitive.

WAVE REGATTA

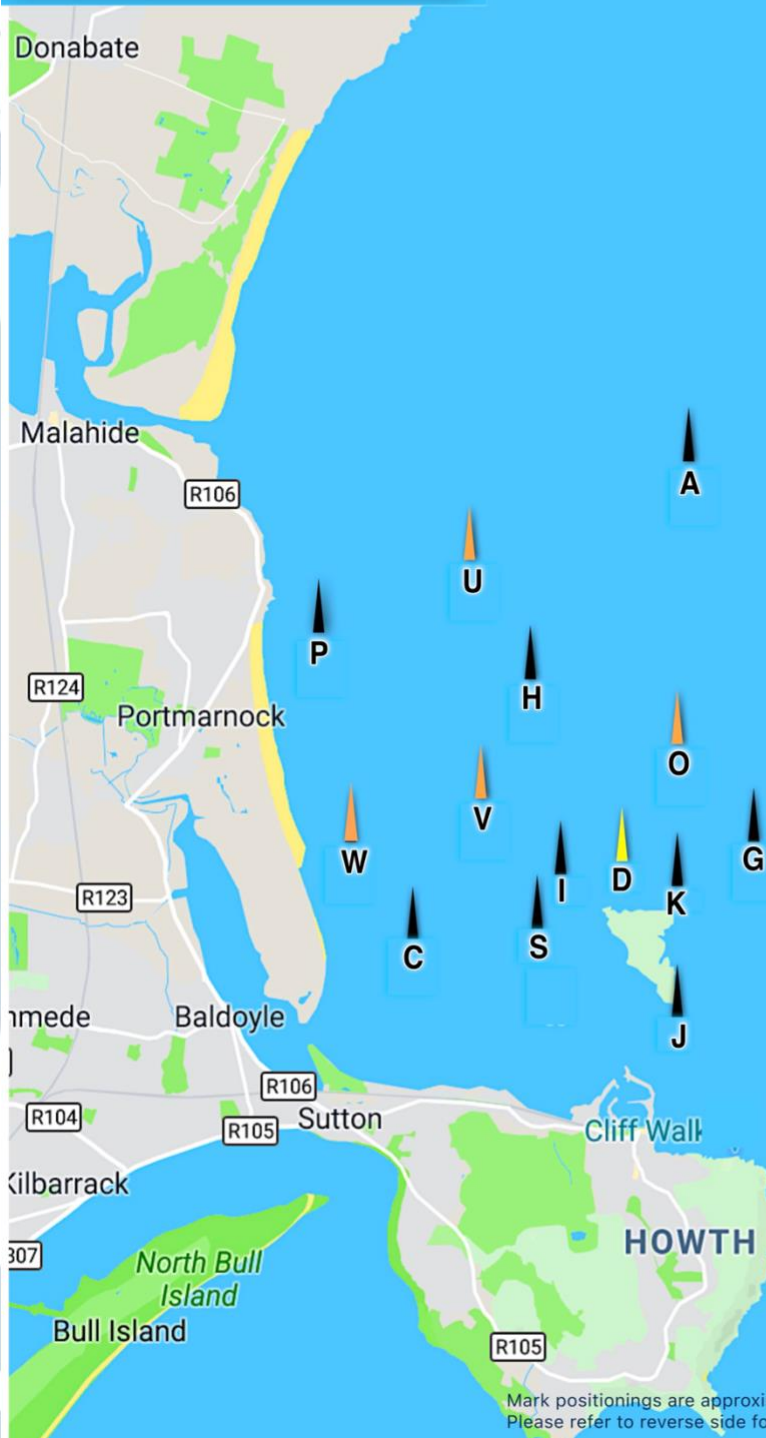
WAVE REGATTA RACE MARKS

TAYCAN

MACAN ELECTRIC

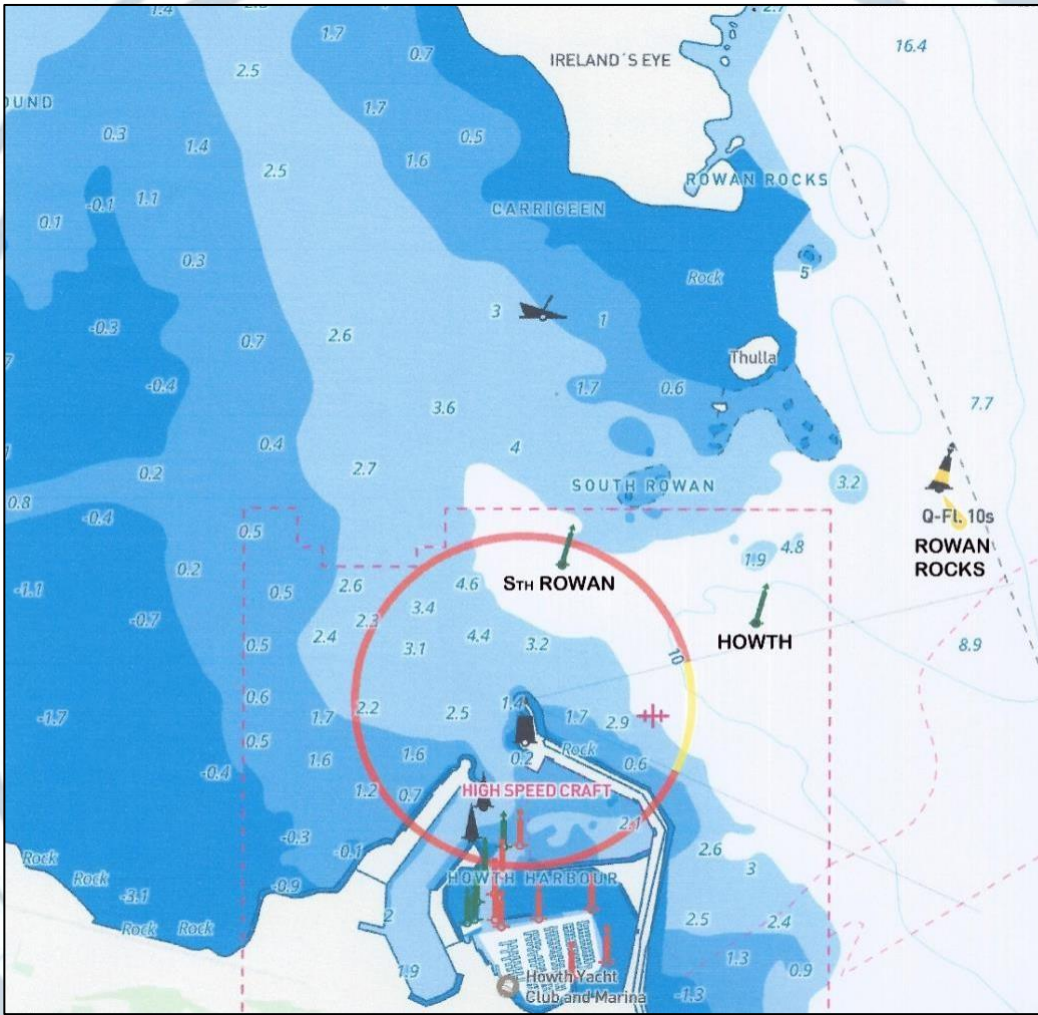
Lambay Island

CAYENNE



Mark positionings are approximate and this chart should not be used for navigation purposes. Please refer to reverse side for mark co-ordinates, descriptions and bearings.

HOWTH SOUND - CHART



LAMBAY CHART

