



## HOWTH YACHT CLUB

# GIBNEY CLASSIC 2016

Organised by Howth Yacht Club Ltd.

**Saturday 9<sup>th</sup> July 2016**



## SAILING INSTRUCTIONS

### **1. RULES:**

Races shall be sailed under the Racing Rules of Sailing (RRS), ISA Prescriptions, the Rules of each class concerned, the Notice of Race except as modified by the Sailing Instructions, these Sailing Instructions and any amendments thereto.

The Gibney Classic will be the scoring race for HYC Club Racing on Saturday, 9<sup>th</sup> July 2016.

### **2. NOTICE TO COMPETITORS:**

The Official Notice Board is located in the archway beside the HYC Marina Office.

### **3. ALTERATIONS TO SAILING INSTRUCTIONS AND/OR NOTICE OF RACE:**

Flag L displayed on the flag pole at the top of HYC Marina Bridge denotes that a change of Sailing Instructions and/or Notice of Race has been made, details of which are posted on the Official Notice Board. Any change in the Sailing Instructions and/or Notice of Race will be displayed at least 1.5 hours before the scheduled start of the first race so affected. For those boats leaving Malahide to compete, any changes to SI will be communicated via the Malahide YC Commodore.

### **4. TIDE TIMES:**

H.W. (Malahide): 1603 3.50m

### **5. SCHEDULE OF RACES:**

<b>Class</b>	<b>Class Flag</b>	<b>Warning Signal</b>	<b>Start</b>
Class 1/2	No. 1 and No.2	1225	1230
Non Spinnaker Cruiser	No. 4	1230	1235
Class 3 / J80	No. 3	1235	1240
Puppeteer 22	A	1240	1245
Howth 17 Footer	C	1245	1250
Squib	K	1250	1255

### **6. STARTING AREA:**

The starting area will be North of Howth. Starts will be from a Committee Boat.

### **7. STARTING LINE:**

The starting line shall be between the red and white pole or main mast of the Committee Boat and an orange outer limit mark.

## **8. STARTING SIGNALS:**

Starts shall be in accordance with RRS 26.

## **9. COURSES:**

Courses for the Gibney Classic shall be as per the **HYC WEDNESDAY COMMITTEE BOAT COURSE CARD Rev A**, [Appendix 1]. **MARK DESCRIPTIONS** shall be as per Appendix 2. These Appendices form part of these Sailing Instructions.

## **10. COURSE DESIGNATION:**

Courses shall be designated by numerals displayed on boards on the Committee Boat. The course applicable to each race will be displayed for not less than 4 minutes before its start. This changes RRS 27.1.

## **11. FINISHING LINE:**

The Finishing Line shall be between the red and white pole or main mast of the Committee Boat displaying a blue flag and an orange Finish Mark. Unless the course is shortened, the Finish line will be located in the vicinity of the entrance channel to Malahide Estuary.

## **12. RE-CROSSING START/FINISH LINES:**

All boats shall keep clear of the starting line until their warning signal. Boats having started shall keep clear of the starting line while other starts are in progress.

## **13. STARTING TIME LIMIT:**

A boat shall not start later than 15 minutes after her valid starting signal.

## **14. FINISHING TIME LIMIT:**

The time limit for the leading boat in each Class shall be 2½ hours from their starting signal. If a boat in a class finishes within this limit, the time for that class shall be extended by 30 minutes. Any boat which fails to finish within the time limit will be scored DNF, Did Not Finish. This changes RRS 35 and A4.1.

## **15. PROTESTS:**

- 15.1 Boats intending to protest shall notify and receive acknowledgement from the race finishing boat within 1 hour of the last boat finishing time in the relevant division/fleet.
- 15.2 Protests shall be heard after racing, at Gibneys Malahide.  
Please contact Emmet Dalton 083 365 2970

## **16. SAFETY:**

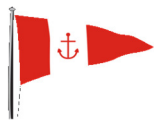
Competitors participate entirely at their own risk; see Fundamental Rule 4, Decision to Race and the ISA Safety Booklet. Open boat entrants are referred to relevant class regulations. The wearing of personal flotation devices in all boats is strongly recommended at all times. The responsibility for the safety of competing boats and their crews lies solely with the said competitors. Howth Yacht Club Ltd. and/or the Organising Committee will not accept any liability for material damage, personal injury or death sustained in conjunction with, prior to, during, or after racing.

## **17. INSURANCE:**

Each participating boat shall be insured with adequate valid third party liability insurance.

## **18. RADIO COMMUNICATION:**

Competitors are advised to keep a listening watch on VHF, Ch. 77 where information relevant to racing may be broadcast. Should this information be broadcast, it shall not constitute outside assistance and shall not be the subject of any protest. Failure to broadcast this information shall not be the basis for any claim for redress. Competitors who retire from a race are required to inform the Race Committee promptly by radio on Channel 77.



# WEDNESDAY APPENDIX 1

## HYC COMMITTEE BOAT COURSE CARD - Rev A

	1	2	3	4	5
	00 ZWIHIF 5.5	ZWCPWIF 6.6	ZUPWPCIF 8.0	ZCIUIHCIF 9.5	ZCIUPWPWCIF 10.5
	01 ZWCPWCF 6.2	ZWCUPWCF 7.9	ZWCUVHPWCF 9.8	ZWCUPWPWCF 10.2	ZWCUCIHPWCF 12.0
	02 ZCHWCF 6.0	ZWCHWCF 6.9	ZWCHCVWCF 8.4	ZWCHCHWCF 10.0	ZWCUCHWCF 11.0
	03 ZCHWCF 6.0	ZWCHWCF 6.9	ZWCHCVWCF 8.7	ZWCHCHWCF 10.0	ZWCUCHWCF 11.0
	04 ZCHWCF 6.0	ZWCHWCF 6.9	ZWCHCVWCF 8.7	ZWCHCHWCF 10.0	ZWCHCVCHWCF 12.1
F-1 E+1	05 ZWCVWCF 5.3	ZWCOWCF 6.9	ZWCOHWCF 8.6	ZWCHWHWCF 10.0	ZWCOHWHWCF 11.6
F-1 E+1	06 ZVWHWCF 6.1	ZWCOVCF 6.7	ZHWCOVCF 7.8	ZVWCOIOVCF 9.0	ZVWCOCOVCF 10.3
F-1 E+1	07 ZVWHWCF 6.1	ZVCD CDVCF 7.6	ZVWHWHCF 8.7	ZVWCOCOVCF 10.3	ZOHWCOCOVCF 11.9
F-1 E+1	08 ZVCDVCF 5.4	ZVCD CDVCF 7.6	ZVWOWVWCF 8.9	ZVCDVWOWCF 9.8	ZVWOUWOWCF 11.8
F-1 E+1	09 ZVCDVCF 5.4	ZVWVWVWCF 7.0	ZVCD CDVWCF 8.6	ZVWOWVWCF 9.6	ZVWOCKVCF 10.8
F-1 E+1	10 ZVWIVWF 5.4	ZVWIVWVWF 7.3	ZVWDWIVWF 8.5	ZDVWDWIVWF 9.4	ZVWDWKVWF 10.4
F-1 E+1	11 ZVWIVWF 5.4	ZVWDVWF 6.1	ZVWIVWVWF 8.2	ZDVWDWIVWF 9.4	ZVWDWKVWF 10.4
F-1 E+1	12 ZVWIVWF 5.4	ZVWIVWVWF 7.6	ZVWIVWVWF 8.2	ZVWDWDHWF 10.2	ZVWDWDWIVWF 11.8
F-1 E+1	13 ZPIVWF 5.7	ZHPIVWF 6.4	ZHPDVWF 7.7	ZHPDVVWVWF 9.4	ZVPDOUOHWF 11.2
F-1 E+1	14 ZVWCWCWF 5.6	ZHPIVWF 6.4	ZHPDVWF 7.7	ZVPIVWCVWF 9.0	ZIPIPIVWF 10.5
	15 ZVWCVWF 5.6	ZVPIVWF 6.7	ZIPDVWF 7.5	ZIPIVWCVWF 9.2	ZVPIPIVWF 10.5
	16 ZVPCVF 5.7	ZPCWCVF 7.2	ZVPCWCVF 7.8	ZVPCPCVF 9.8	ZIUDHPCVF 10.8
	17 ZVPCVF 6.0	ZVPCVIVF 7.2	ZVPWPCVF 8.3	ZVPCPCVF 9.8	ZVPCIHIOHF 11.5
	18 ZVPWVF 5.4	ZVPWPVVF 7.4	ZVPWPCVF 8.5	ZVPCIHIVF 10.3	ZPCIUIHF 11.6
	19 ZIHIHF 6.0	ZVPWPVVF 7.4	ZVPWHIHF 9.1	ZVPWUCHF 10.5	ZIUCUCHF 12.2
	20 ZIHCVF 5.9	ZIHCHF 7.2	ZIHCHCIVF 9.2	ZIHCHCIVF 10.9	ZIUWUWVHF 12.1
	21 ZIHCVF 5.9	ZIHCHF 7.2	ZIHCVCIHF 9.3	ZIHCUWCIVF 10.5	ZIUWUWCIVF 12.4
F-1 E-1	22 ZVCVCF 5.2	ZIVCVCF 6.4	ZIHCVCF 7.5	ZIHCVCF 9.3	ZIHCUWVCF 10.2
F-1 E-1	23 ZVCVCF 5.2	ZCOCVF 6.0	ZCOCOIVF 8.6	ZCHWHWCVCF 9.2	ZCOCVCOIVF 10.3
F-1 E-1	24 ZCHWCVF 6.0	ZCVC OIVF 6.8	ZCHWCOIVF 8.7	ZCOCOHWCVCF 10.2	ZIHHWCOIVF 11.5
F-1 E-1	25 ZCDCIVF 5.2	ZIHWCVF 6.5	ZCOCOF 8.0	ZIOCOCIVF 9.7	ZCOCOCOF 11.5
F-1 E-1	26 ZIVWCVF 5.1	ZCVWVWCVF 7.0	ZCDCDCIVF 7.7	ZCDCDCOF 9.2	ZCOWOWCVF 11.0
F-1 E-1	27 ZCVWCVF 5.4	ZCVWVWCVF 7.0	ZCDCDCIVF 7.7	ZCOWCDCIVF 9.4	ZCOWOWCVF 11.0
F-1 E-1	28 ZCIWCIF 5.0	ZCIWIWCIF 6.9	ZCDWIWCIF 8.0	ZCDWDWCIF 9.1	ZCDWKWCIF 10.2
F-1 E-1	29 ZCIWCIF 5.0	ZCIWIWCIF 7.0	ZCDWIWCIF 8.0	ZCDWDWCIF 9.1	ZCDWKWCIF 10.2
F-1 E-1	30 ZCIWCIF 5.0	ZCIWIWCIF 7.0	ZCDWIWCIF 8.0	ZCDWDWCIF 9.1	ZCDWKWCIF 10.2
F-1 E-1	31 ZCDVCF 5.2	ZCIPCF 6.1	ZCDVKVCF 7.8	ZCDPDCIF 9.6	ZCKPDCIF 10.7
F-1 E-1	32 ZWCWCIF 4.5	ZPWCWCIF 6.3	ZWCIPWCIF 7.5	ZPIPWCIF 8.9	ZCIPIWCIF 10.7
	33 ZWCWCIF 4.5	ZPWCWCIF 6.3	ZWCIPWCIF 7.5	ZPWCIPWCIF 8.9	ZCIPIWCIF 10.7
	34 ZWCWCIF 4.5	ZWCPCIF 6.7	ZWCWPCIF 8.1	ZWCPCPWCIF 10.2	ZPWCPCWCIF 12.0
	35 ZCIVCF 4.6	ZWCPCIF 6.7	ZWCPIVCF 8.3	ZWCPCPWCIF 10.2	ZCIUIUCIF 10.9
	40 Z Gy L F	Z Gy L Z L F	Z Gy L Z L Z Gy L F	Z Gy L Z L Z Gy L Z L F	
	50 Z Wg L F	Z Wg L Z Wg L F	Z Wg L Z Wg L Z Wg L F	Z Wg L Z Wg L Z Wg L F	

Mark F on Wednesday / Saturday Committee Boat courses refers to the Orange Finish Mark (S. I. 12)

Marks coloured red shall be rounded/passed to port Marks coloured green shall be rounded/passed to starboard  
Courses were designed with the aid of Soft Touch Programmes

## NAVIGATION MARKS AND OBSTRUCTIONS

The Navigation Marks in and around Howth Sound shall be left as follows:

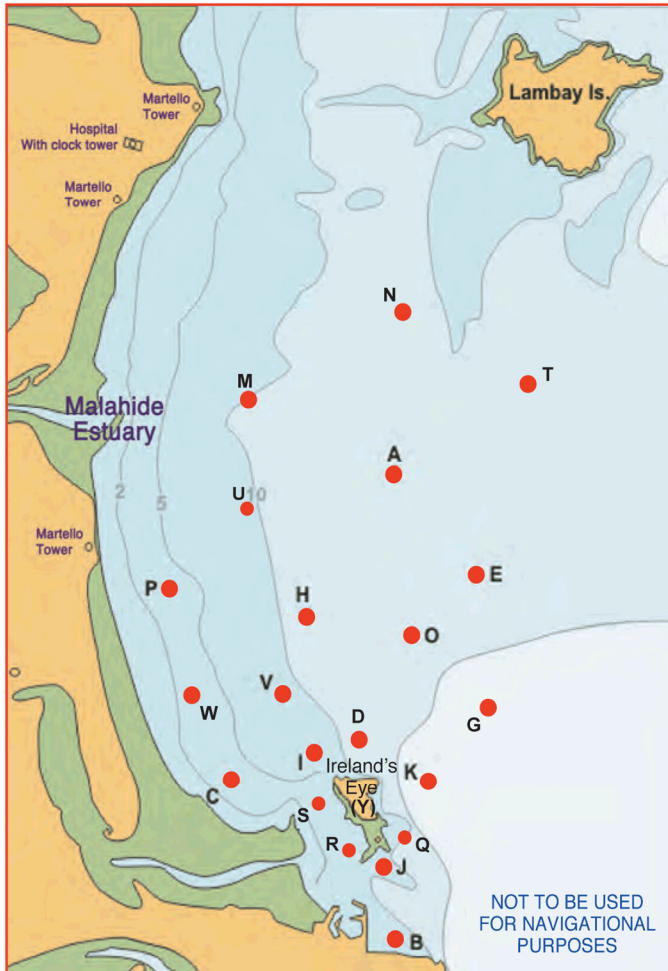
South Rowan: to be passed to the West and South  
 Rowan Rocks: to be passed to the East and South

Any part of Ireland's Eye capable of being touched by a boat while racing is designated as an obstruction to sea room. Competitors are reminded of a trawler wreck in Howth Sound, south of the Carrgran Rocks on Ireland's Eye, which is submerged at most stages of the tide. Boats racing in the vicinity of Baldoyle Spit shall sail North and East of the Spit Mark (S).

## APPENDIX 2

### Racing Marks (Approximate)

	NAME	SHAPE	COLOUR	DEG	MIN	DEG	MIN
A	Apex	Conical	Black	53	26.76	06	03.26
C	Cush	Conical	Black	53	24.50	06	05.44
D	Dunbo	Conical	Yellow	53	24.73	06	03.85
E	East	Conical	Black	53	26.00	06	02.20
G	Garbh	Conical	Black	53	25.00	06	02.32
H	Hub	Conical	Black	53	25.71	06	04.43
I	Island	Conical	Black	53	24.70	06	04.36
J	Thulla	Conical	Black	53	23.80	06	03.40
K	Stack	Conical	Black	53	24.60	06	03.11
M	Malahide	Conical	Black	53	27.23	06	05.59
N	North	Conical	Black	53	27.99	06	03.40
O	Osprey	Conical	Orange	53	25.41	06	03.52
P	Portmarnock	Conical	Black	53	25.89	06	06.30
Q	Rowan Rocks	IALA	Black/Yellow	53	23.88	06	03.22
R	South Rowan	IALA	Green	53	23.78	06	03.88
S	Spit	Conical	Black	53	24.42	06	04.51
T	Talbot	Conical	Black	53	27.31	06	01.30
U	Ulysses	Conical	Orange	53	26.22	06	04.97
V	Viceroy	Conical	Orange	53	25.12	06	04.78
W	West	Conical	Black	53	24.96	06	06.07
Y	Ireland's Eye	Island					
Z	Zephyr	Inflatable	Black				Approx. Upwind of Start Line



### COURSE SELECTION

- 1). Courses will be designated by three numeral boards.
- 2). The first two boards will indicate the beat, ie 07 = 070°
- 3). The third board indicates the column number across the top of the page. Therefore Course 073 is the third course in from the left on line 07.

### Race Marks - Relative Bearings Table - Magnetic (Approx.)

	A	B	C	D	E	G	H	I	J	K	M	N	O	P	Q	S	T	U	V	W	X
A		186	216	196	146	168	220	207	188	184	295	002	192	250	185	203	071	248	215	229	200
B	006		319	352	019	024	350	336	357	010	347	005	002	331	010	331	022	347	340	321	328
C	036	139		084	058	081	032	077	126	092	004	025	058	346	121	111	047	015	038	327	127
D	016	172	264		043	078	347	272	170	110	344	011	023	315	161	233	036	342	312	287	212
E	326	199	238	223		190	264	233	204	207	307	346	238	273	202	225	028	284	246	252	220
G	348	204	261	258	010		305	236	214	236	325	354	306	297	211	249	021	314	281	275	239
H	040	170	212	167	084	125		191	168	151	342	021	125	285	164	187	055	334	205	238	184
I	027	156	257	092	053	083	011		148	101	353	018	048	326	140	177	043	357	350	293	172
J	008	177	306	350	024	034	348	328		018	345	006	004	326	062	317	026	345	334	312	305
K	004	190	272	290	027	056	331	281	198		337	003	350	310	190	259	028	332	304	288	242
M	115	167	184	164	127	145	162	173	165	157		066	152	204	163	173	094	166	173	193	172
N	182	185	205	191	166	174	201	198	186	183	246		187	225	184	196	125	214	202	214	194
O	012	182	238	203	058	126	305	228	184	170	332	007		292	180	215	040	319	256	260	207
P	070	151	166	135	093	117	105	146	146	130	024	045	112		143	151	071	073	136	178	153
Q	005	190	301	341	022	031	344	320	242	010	343	004	360	323		308	024	342	329	308	295
S	023	151	282	056	045	069	007	024	137	082	353	016	035	327	128		039	357	342	304	160
T	251	202	227	216	208	201	235	223	206	208	274	305	220	251	204	219		249	229	236	215
U	068	167	195	162	104	134	154	177	165	152	346	034	139	253	162	177	069		180	213	176
V	035	160	218	132	066	101	025	170	154	124	353	022	076	316	149	173	049	000		264	171
W	049	141	147	107	072	095	058	113	132	108	013	034	080	358	128	129	056	033	084		135
X	020	148	307	032	040	059	004	352	125	062	352	014	027	333	115	340	035	356	351	315	