

AUTUMN LEAGUE COURSE CARD INSHORE COMMITTEE BOAT STARTS



	1	2	3	4	5	6	7
00	Z P W S F	Z W C P W S F	Z W C P W P W C S F	Z W C P C P C S F	Z W C P W P C P S F	Z W C P C P C P W S F	
01	Z P W C S F	Z P W P W S F	Z P W P W P W C S F	Z P W P C U S F	Z P C U P W P W S F	Z P W P W C U C U S F	
02	Z P C S F	Z W C U C S F	Z P C U P C S F	Z W C U C U S F	Z W C U P W P W C U S F	Z W C U C U C U S F	
03	Z W V C S F	Z P W U W S F	Z P W U W C V C S F	Z P W U W U W S F	Z P W U W U W C V S F	Z P W U W U W C V C V C S F	
04	Z W C H S F	Z H W C H C V C S F	Z W C H C H S F	Z W C H W U W C S F	Z W C H C V C H C V C S F	Z W C H C V C H C V C V C S F	
05	Z W C V C S F	Z W C O S F	Z W C O I O S F	Z W C V C O W S F	Z W C O C O V S F	Z W C O I O C O S F	
06	Z W C V C S F	Z W C O S F	Z W C O C S F	Z W C V C O C S F	Z W C O C O S F	Z W C O I O C O S F	
07	Z W C I C S F	Z W C O S F	Z W C O C I C S F	Z W C O I O V S F	Z W C O C O V S F	Z W C O C O C O S F	Z W C O C O C O V S F
08	Z V C D C I S F	Z V C D C D C I S F	Z V W O C D C I S F	Z V C K V W O C I S F	Z V W O W O C I S F	Z V W O W O W O C I S F	
09	Z V C D C I S F	Z V C D C D C I S F	Z V W O C D C I S F	Z V C K V W O C I S F	Z V W O W O C I S F	Z V W O W O W O C I S F	
10	Z V W I V C S F	Z V W I W I V C S F	Z V W D W D V C S F	Z V W D W I W I V C S F	Z V W D W D W D V C S F	Z V W D W D W D W I V C S F	
11	Z V W I V C S F	Z V W I W I V C S F	Z V W D W D V C S F	Z V W D W I W I V C S F	Z V W D W D W D V C S F	Z V W D W D W D W I V C S F	
12	Z V W I W S F	Z V W I W I V C S F	Z V W D W D V C S F	Z V W D W D W S F	Z V W D W D W I W S F	Z V W D W D I W I V C S F	
13	Z V D P S F	Z P I V W S F	Z P D P S F	Z V D P D V W S F	Z V D P D V D V W S F	Z V D P D P D V W S F	
14	Z V P S F	Z V P I P W S F	Z I P I P S F	Z I P V P V P S F	Z V P V P I P S F	Z V P D P D P S F	
15	Z I P S F	Z I W C I P S F	Z I P I P S F	Z I P V P I W C S F	Z I P V P I P S F	Z I P I P I P S F	Z I P I P V P I P S F
16	Z V P S F	Z P C W C S F	Z V P C P S F	Z V P C P C W C S F	Z V P C V P I V W C S F	Z P C P C P S F	Z V P C P C V P C P S F
17	Z I P C S F	Z V P C V W C S F	Z I P C P C S F	Z V P C P C I V S F	Z V P C P C P C S F	Z V P C P C P C I V I V S F	Z V P C P C V P C P S F
18	Z I P C S F	Z V P W H S F	Z V P W P W V U S F	Z I U I U S F	Z V P C I U I H S F	Z V P C I U I U S F	Z I U I U I V P W P C S F
19	Z I H S F	Z V P W P W S F	Z V U C U C S F	Z V U C U C V S F	Z V U C U C H S F	Z V U C U C U S F	
20	Z V U C I S F	Z V H C H C S F	Z V U C H C I S F	Z V U C U C I S F	Z V U C H V U C I S F	Z V U C U C U C S F	Z I U C U C U C I S F
21	Z I H C S F	Z I H C H C S F	Z V H C H C V C S F	Z V H C H C H C S F	Z V U W U W V H C S F	Z V H C H C H C H C S F	Z I U C U C U C I S F
22	Z I H C S F	Z V U W U W S F	Z V H C V C U W S F	Z V U W U W U W S F	Z V H C V C U W U W S F	Z V H C H C U W U W S F	
23	Z V H W S F	Z V H W H W S F	Z V U W U W S F	Z V H C V C U W S F	Z V U C U C U C S F	Z V H C H C U W U W S F	Z V U W U W U W U W S F
24	Z V H W S F	Z V H W H W S F	Z V H W O C S F	Z V H W H W O S F	Z V H W O C O S F	Z V H W H W O C O S F	Z V H W H W O C O I S F
25	Z I D C D Y S F	Z I D C D C D Y S F	Z I O W I D C D Y S F	Z I O W O W I D Y S F	Z I O W O W I D C S F	Z I O W O W I D C D C S F	
26	Z I D C D C S F	Z I D C D C D Y S F	Z I O W I D C D Y S F	Z I O W O W I D Y S F	Z I O W O W I D C S F	Z I O W O W I D C D C S F	
27	Z I D C D C S F	Z I D C D C D Y S F	Z I O W I D C D Y S F	Z I O W O W I D Y S F	Z I O W O W I D C S F	Z I O W O W I D C D C S F	
28	Z C D W S F	Z C D W I W S F	Z C I W I W C I W S F	Z I D W D W C I W S F	Z C D W D W C D W S F	Z I K W C D W C D W S F	
29	Z C D W S F	Z C D W I W S F	Z C I W I W C I W S F	Z I D W D W C I W S F	Z C D W D W C D W S F	Z I K W C D W C D W S F	
30	Z C D W S F	Z C D W I W S F	Z C I W I W C I W S F	Z I D W D W C I W S F	Z C D W D W C D W S F	Z I K W C D W C D W S F	
31	Z C I P S F	Z C I P W C W C S F	Z C I P I P W C S F	Z C I P I P W C W S F	Z C I P V P I P S F	Z C I P V P I P V P S F	
32	Z C I P S F	Z C I P W C W C S F	Z C I P I P S F	Z W C I P I P W C W C S F	Z C I P I P I P S F	Z C I P I P I P I V S F	
33	Z W C W C W C S F	Z C I P W C W C S F	Z C I P I P S F	Z W C I P I P W C W C S F	Z C I P I P I P S F	Z C I P I P I P I V S F	
34	Z W C P W C S F	Z C P C W C S F	Z W C P C P C W S F	Z W C P C P C P S F	Z W C P C P C P S F	Z W C P C P C P C P S F	
35	Z W C P W C S F	Z W C P W C W C S F	Z W C P C P S F	Z W C P C P C W S F	Z W C P C P C P C W S F	Z W C P C P C P C P S F	
40	Z W g L F	Z W g L Z L F	Z W g L Z L Z W g L F	Z W g L Z L Z W g L Z L F	Olympic Course: Wg = Gybe Mark		
50	Z O f L F	Z O f L Z O f L F	Z O f L Z O f L Z O f L F	Z O f L Z O f L Z O f L Z O f L F	Windward / Leeward Course: Of = Offset Mark		

All marks are rounding marks except for those in a □(box) which are passing marks

Marks coloured red shall be rounded / passed to port

Marks coloured green shall be rounded / passed to starboard

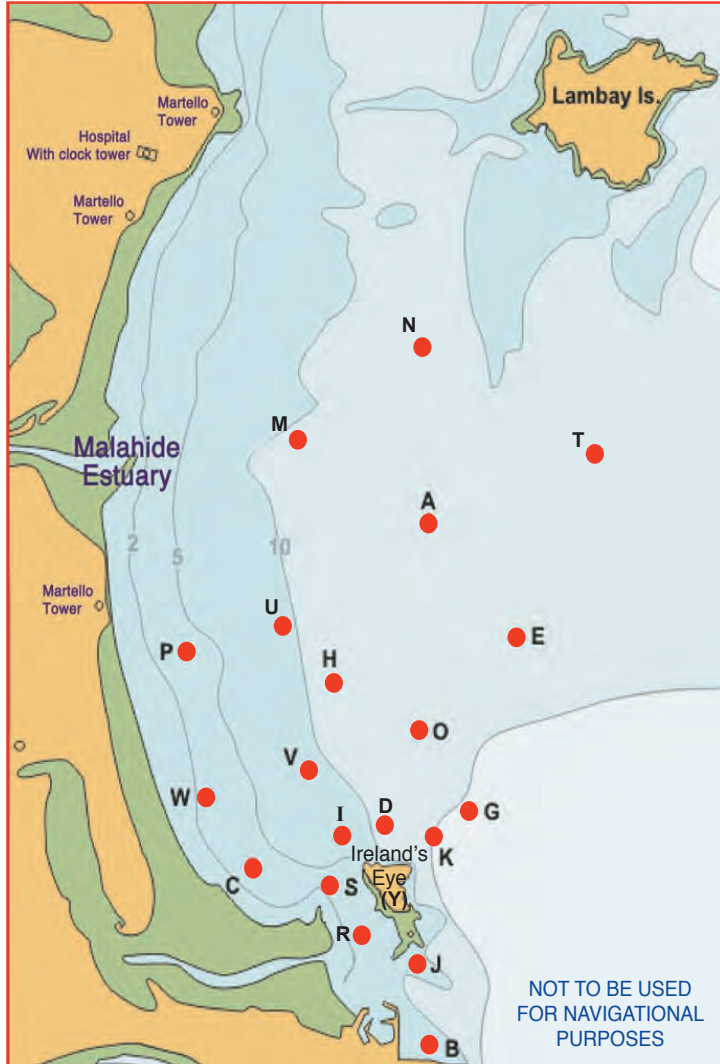
Courses were designed with the aid of Soft Touch Programmes

NAVIGATION MARKS AND OBSTRUCTIONS

The Navigation Marks in and around Howth Sound shall be left as follows:

South Rowan: to be passed to the West and South
 Rowan Rocks: to be passed to the East and South

Any part of Ireland's Eye capable of being touched by a boat while racing is designated as an obstruction to sea room. Competitors are reminded of a trawler wreck in Howth Sound, south of the Carrgran Rocks on Ireland's Eye, which is submerged at most stages of the tide. Boats racing in the vicinity of Baldoyle Spit shall sail North and East of the Spit Mark (S).



Racing Marks (Approximate)

ID	NAME	SHAPE	COLOUR	DEG	MIN	DEG	MIN
A	Apex	Conical	Black	53	26.76	06	03.26
C	Cush	Conical	Black	53	24.50	06	05.44
D	Dunbo	Conical	Yellow	53	24.73	06	03.85
H	Hub	Conical	Black	53	25.71	06	04.43
I	Island	Conical	Black	53	24.70	06	04.36
K	Stack	Conical	Black	53	24.60	06	03.11
M	Malahide	Conical	Black	53	27.23	06	05.59
O	Osprey	Conical	Orange	53	25.41	06	03.52
P	Portmarnock	Conical	Black	53	25.89	06	06.30
R	South Rowan	IALA	Green	53	23.78	06	03.88
S	Spit	Conical	Black	53	24.42	06	04.51
U	Ulysses	Conical	Orange	53	26.22	06	04.97
V	Viceroy	Conical	Orange	53	25.12	06	04.78
W	West	Conical	Black	53	24.96	06	06.07
X	Xebec	Barrel	Black	53	24.12	06	04.33
Y	Ireland's Eye	Island					
Z	Zephyr	Inflatable	Yellow	Approx. Upwind of Start Line			

COURSE SELECTION

- 1). Courses will be designated by three numeral boards.
- 2). The first two boards will indicate the beat. ie 07 = 070°
- 3). The third board indicates the column number across the top of the page. Therefore Course 073 is the third course in from the left on line 07.

Row 40 & Row 50

ID	Name	Shape	Colour
D	Distance	Pillar	Orange
Z	Windward	Inflatable	Yellow
Wg	Wing	Round	Yellow
L	Leeward	Round	Orange
Of	Offset	Round	Yellow

Race Marks - Relative Bearings Table - Magnetic (Approx.)

	A	B	C	D	E	G	H	I	J	K	M	N	O	P	Q	S	T	U	V	W	X
A		186	216	196	146	168	220	207	188	184	295	002	192	250	185	203	071	248	215	229	200
B	006		319	352	019	024	350	336	357	010	347	005	002	331	010	331	022	347	340	321	328
C	036	139		084	058	081	032	077	126	092	004	025	058	346	121	111	047	015	038	327	127
D	016	172	264		043	078	347	272	170	110	344	011	023	315	161	233	036	342	312	287	212
E	326	199	238	223		190	264	233	204	207	307	346	238	273	202	225	028	284	246	252	220
G	348	204	261	258	010		305	236	214	236	325	354	306	297	211	249	021	314	281	275	239
H	040	170	212	167	084	125		191	168	151	342	021	125	285	164	187	055	334	205	238	184
I	027	156	257	092	053	083	011		148	101	353	018	048	326	140	177	043	357	350	293	172
J	008	177	306	350	024	034	348	328		018	345	006	004	326	062	317	026	345	334	312	305
K	004	190	272	290	027	056	331	281	198		337	003	350	310	190	259	028	332	304	288	242
M	115	167	184	164	127	145	162	173	165	157		066	152	204	163	173	094	166	173	193	172
N	182	185	205	191	166	174	201	198	186	183	246		187	225	184	196	125	214	202	214	194
O	012	182	238	203	058	126	305	228	184	170	332	007		292	180	215	040	319	256	260	207
P	070	151	166	135	093	117	105	146	146	130	024	045	112		143	151	071	073	136	178	153
Q	005	190	301	341	022	031	344	320	242	010	343	004	360	323		308	024	342	329	308	295
S	023	151	282	056	045	069	007	024	137	082	353	016	035	327	128		039	357	342	304	160
T	251	202	227	216	208	201	235	223	206	208	274	305	220	251	204	219		249	229	236	215
U	068	167	195	162	104	134	154	177	165	152	346	034	139	253	162	177	069		180	213	176
V	035	160	218	132	066	101	025	170	154	124	353	022	076	316	149	173	049	000		264	171
W	049	141	147	107	072	095	058	113	132	108	013	034	080	358	128	129	056	033	084		135
X	020	148	307	032	040	059	004	352	125	062	352	014	027	333	115	340	035	356	351	315	